



Meridian Series[®]



Louvreclad's Meridian Series[®] offers large fixed blades - enabling greater span while allowing maximum airflow.

Distinctive Features + Diverse Applications + Multitude of Benefits:

- Ideal for large louvre banks
- Can be inverted
- Ideal for roof mounted plant screens
- High strength and heavy duty blade

Attention to Detail:

- 140mm Blade Pitch
- 60% free open area
- Maximum blade span: 2000mm
- Maximum blade length: 6500mm



**EXCELLENT SPANNING
CAPABILITIES**

Performance Tested to AS/NZS 4740:2000



Rain Defence: Standard: Class D

Aerodynamics: Standard: Class 2

Note: Full CFD report available on request.



visit louvrecld.com phone 1300 165 678

DRAFT SPECIFICATION

Louvres will be Louvreclad Meridian Series[®] louvre. Performance tested to AS/NZS 4740:2000 the Meridian Series[®] Louvre profile achieves a Class D 57% rain defence rating and Class 2 for Aerodynamics at velocities from 0.5-3.5m/s. It also provides 60% free open area.

Base Material & Finish

Louvres will be manufactured in [powder coated/anodised] aluminium finish in [state colour]

Accessories

Louvres will be fitted with [nominate options/accessories from the selection].

Installation and Mounting

Installation and mounting details will be designed in accordance with proprietary systems and recommendations as designed and manufactured by Louvreclad Pty. Ltd. Phone: 1300 165 678 Email: sales@louvreclad.com

Base Material Options

- Extruded Aluminium

Finishes Available

Choose from the following range of finishes:

- complete powder coated range
- complete anodised range

Specialised coatings are also available on request.

Accessories

Bird/Vermin Mesh

Select from the following:

- galvanised
- steel
- plastic

Insect Mesh

Select from the following:

- stainless steel

Other Louvre Accessories

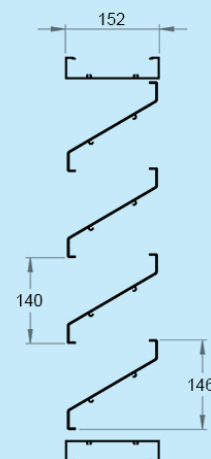
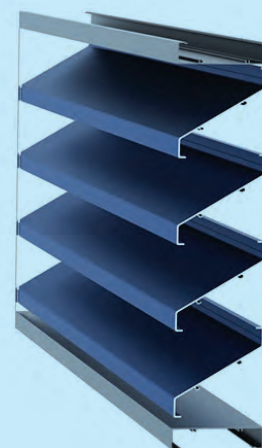
- Security screens and bars
- Blanking sheets
- Volume control dampers
- Fire and smoke dampers
- Dust filters
- 2nd stage louvre

Warranties & Certification

- Powder coat / Anodise manufacturer's warranty
- Louvreclad standard one-year workmanship warranty. Extended Warranty available [POA]
- Engineering Certificate to be supplied [Form 15+16]
- Non-combustible AS1530.3 Test Certificate

PROFILES

Meridian Series[®] standard louvre



WOULD YOU LIKE TO KNOW MORE?

If you have any questions about this product, or if you would like to speak to a member of our expert team about how we can tailor a solution for you, call: **1300 165 678** or visit: louvreclad.com