



## Merlin Series<sup>®</sup>



SCREENS

Louvreclad's Merlin Series<sup>®</sup> provides the ultimate in spanning and cantilevering capabilities. Designers can mount this blade in various configurations.

### Distinctive Features + Diverse Applications + Multitude of Benefits:

- Delivered to site ready-made for single-trade installation
- Various configurations available
- Ultimate spanning and cantilevering capabilities

### Attention to Detail:

- 450mm width
- 60mm depth
- Maximum blade span: 4000mm



**EXCELLENT SPANNING  
CAPABILITIES**



*Thinking outside for inside performance*

## DRAFT SPECIFICATION

Screens will be Louvreclad Merlin Series<sup>®</sup> base module. Blades will be \_\_\_\_\_ [Operable/Fixed] if fixed [state pitch] mm pitch at [state angle]° angle.

### Base Material & Finish

Screens will be manufactured in [powder coated/anodised] aluminium finish in [state colour]

### Operation Method [if applicable]

The operation method will be [Electric Motor/Manual winder/other - choose method]

### Control System [if applicable]

Automated Control will be by [specify sensors and control system]

### Installation and Mounting

Installation and mounting details will be designed in accordance with proprietary systems and recommendations as designed and manufactured by Louvreclad Pty. Ltd. Phone: 1300 165 678 Email: sales@louvreclad.com

### Base Material Options

- Extruded Aluminium

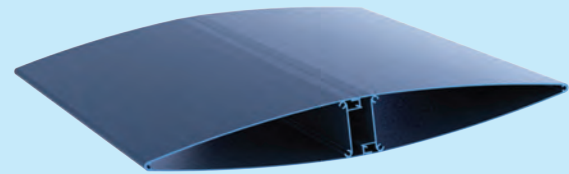
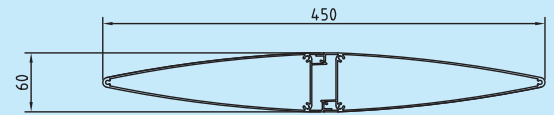
### Finishes Available

Choose from the following range of finishes:

- complete powder coated range
- complete anodised range

*Specialised coatings are also available on request.*

## PROFILES





**i WOULD YOU LIKE TO KNOW MORE?**

If you have any questions about this product, or if you would like to speak to a member of our expert team about how we can tailor a solution for you, call: **1300 165 678** or visit: **[louvreclad.com](http://louvreclad.com)**