



## Ellenborough Series<sup>®</sup> Zero vision louvre



Louvreclad's Ellenborough Series<sup>®</sup> is a zero vision, chevron louvre made from high quality extruded aluminium which make it an ideal vertical louvre solution, while also being suitable to horizontal configurations.

### Distinctive Features:

- Blades are of extruded aluminium construction
- Ideal for screening areas needing both aesthetics & privacy
- Both sides appear the same
- Vertical and Horizontal Configurations
- Zero Vision for maximum privacy screening

### Attention to Detail:

- 62.5mm pitch
- 50% free open area
- Maximum blade span: 2000mm
- Designed, engineered and certified for incidental live load.



**EXTRUDED FULL CHEVRON  
LOUVRE SCREEN**

### Performance tested to AS/NZS 4740:2000



Rain Defence: Vertical Class D, Horizontal Class B



Aerodynamics: Standard: Class 3

Note: Full CFD report available on request.



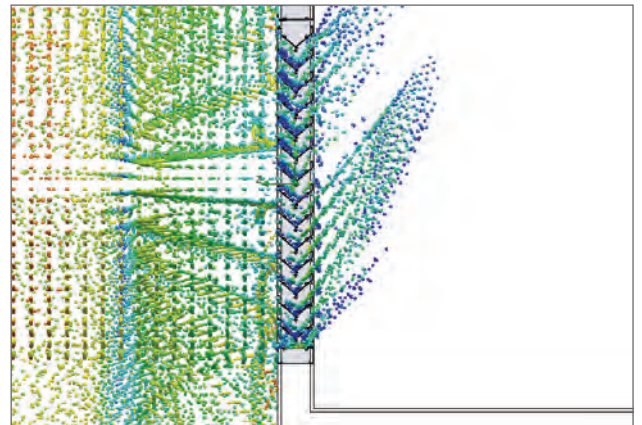
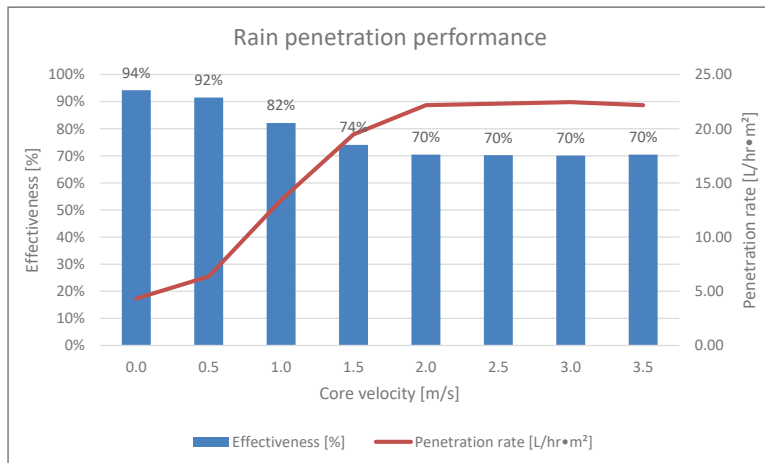
visit [louvreciad.com](http://louvreciad.com) phone 1300 165 678

## PERFORMANCE DATA

Tested to AS/NZS 4740:2000, the Ellenborough Series® provides industry standard rain defence and air flow performance and is designed specifically for mechanical plant room and zero vision external screening.

If you're looking for zero vision full chevron vertical louvres, this high-quality system is ideal for all your commercial building and external screening requirements.

### Vertical Configuration:



Rain penetration - Vertical Configuration

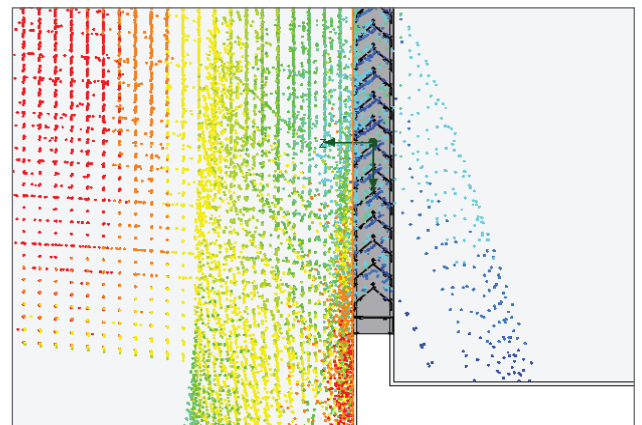
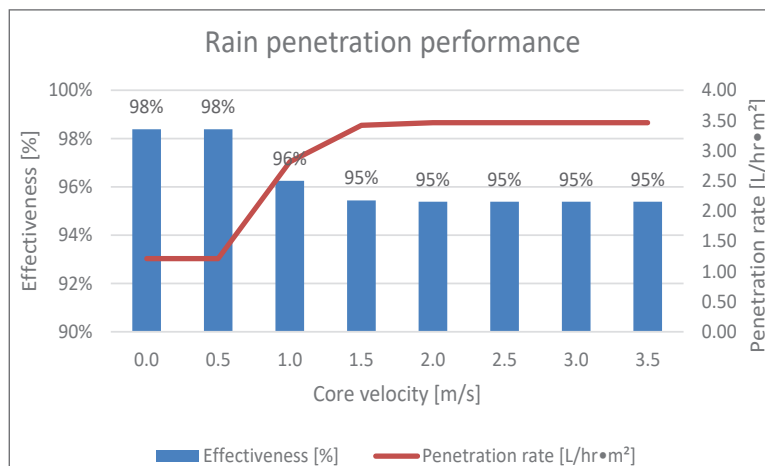
### Rain Defence tested to AS/NZS 4740:2000

The rain penetration analysis based AS/NZS 4740:2000 was conducted at a constant rain flow rate with the ventilation rate ranging from 0.5m³/s to 3.5 m³/s.

Results concluded that the ventilator achieves an average Class D rain defence performance at core velocities up to 3.5m/s. The rain penetration effectiveness for this model ranged from 94% to 70% resulting in an average of 78% effectiveness.

### Horizontal Configuration:

The results concluded that when the ventilator is installed horizontally it can achieve a Class B, 96% effective rain defence performance rating at core velocities from 0-3.5m/s.

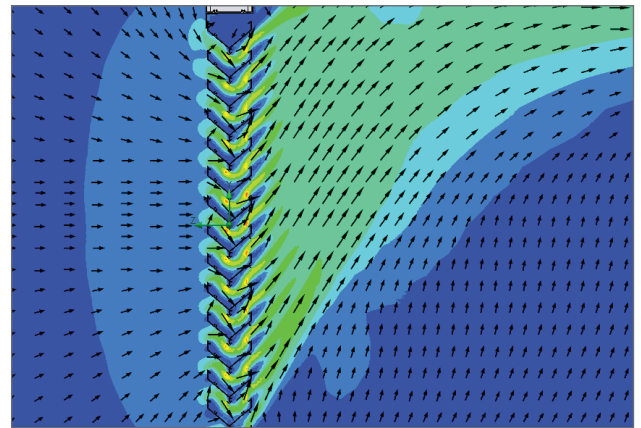
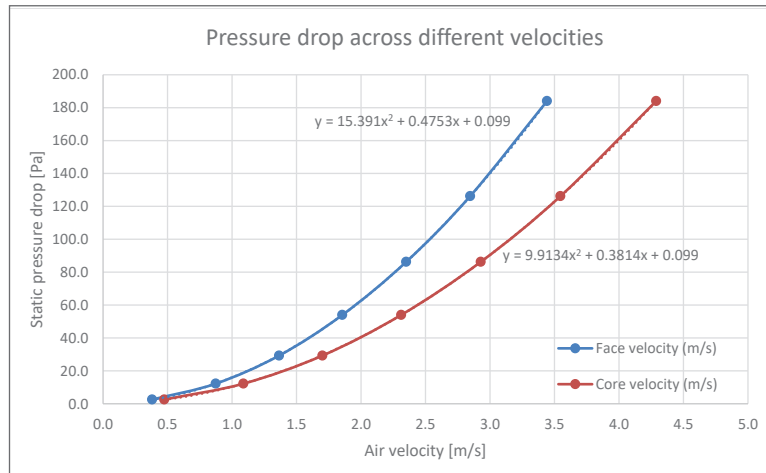


Rain penetration - Horizontal Configuration



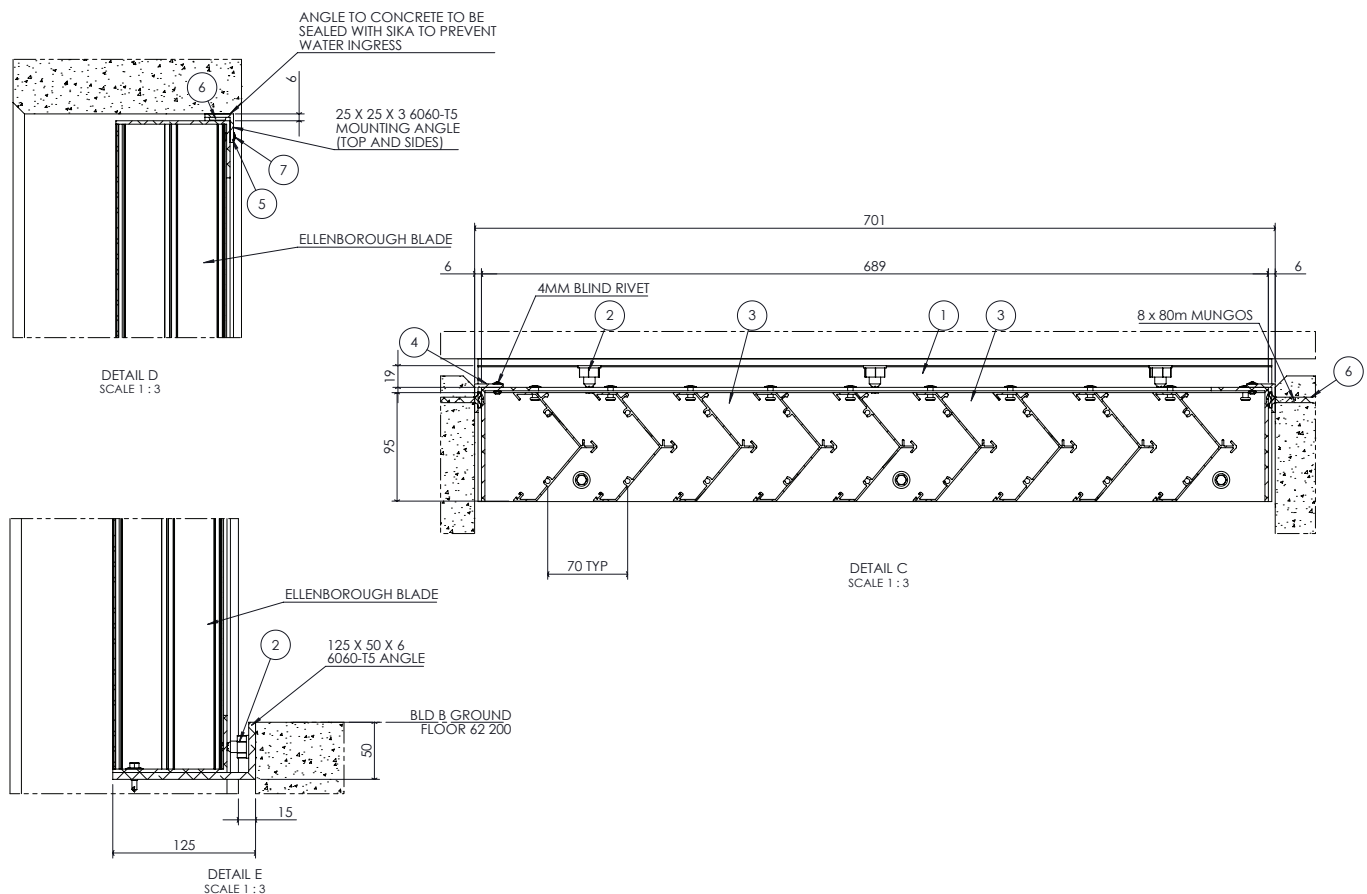
## Aerodynamics tested to AS/NZS 4740:2000

This aerodynamics and discharge coefficient analysis was conducted to AS/NZS 4740:2000 with the ventilation rate ranging from 0.4m/s to 3.4m/s. Table 2 summarizes the ventilator's aerodynamic performance at different face velocities. The average discharge coefficient of the ventilator was 0.367 and the effective aerodynamic area was 0.19m<sup>2</sup> achieving a Class 3 performance rating.



Velocity vectors

## Typical Connection Detail



## DRAFT SPECIFICATION

Louvres will be Louvreclad Ellenborough Series® full chevron zero vision louvre. Performance tested to AS/NZS 4740:2000 Ellenborough Series perforated steel louvre achieves a Class D for rain defence and Class 3 for aerodynamics at velocities from 0.5-3.5m/s with 50% free open area.

### Base Material & Finish

Louvres will be manufactured in [powder coated/anodised] aluminium finish in [state colour]

### Accessories

Louvres will be fitted with [nominate options/accessories from the selection].

### Installation and Mounting

Installation and mounting details will be designed in accordance with proprietary systems and recommendations as designed and manufactured by Louvreclad Pty. Ltd. Phone: 1300 165 678 Email: sales@louvreclad.com

### Base Material

Extruded Aluminium

### Finishes Available

Choose from the following range of finishes:

- complete powder coated range
- complete anodised range

*Specialised coatings are also available on request.*

### Accessories

#### Bird/Vermin Mesh

Select from the following:

- galvanised
- galvanised powder coated
- stainless steel
- plastic
- perforated metal
- expanded metal

#### Insect Mesh

Select from the following:

- aluminium
- fibreglass
- stainless steel
- perforated metal

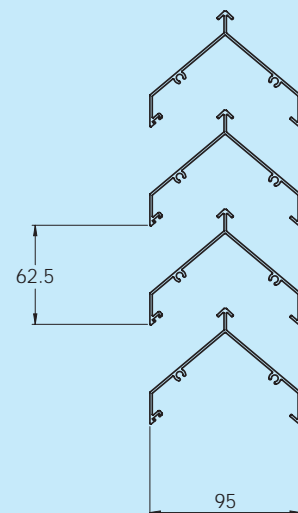
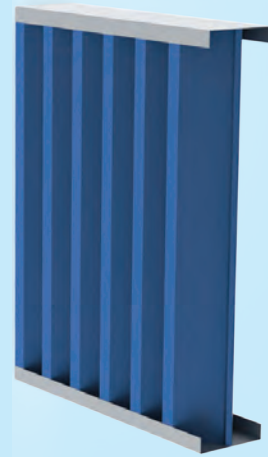
### Other Louvre Accessories

- Security screens and bars
- Blanking sheets
- Volume control dampers
- Fire and smoke dampers
- Dust filters

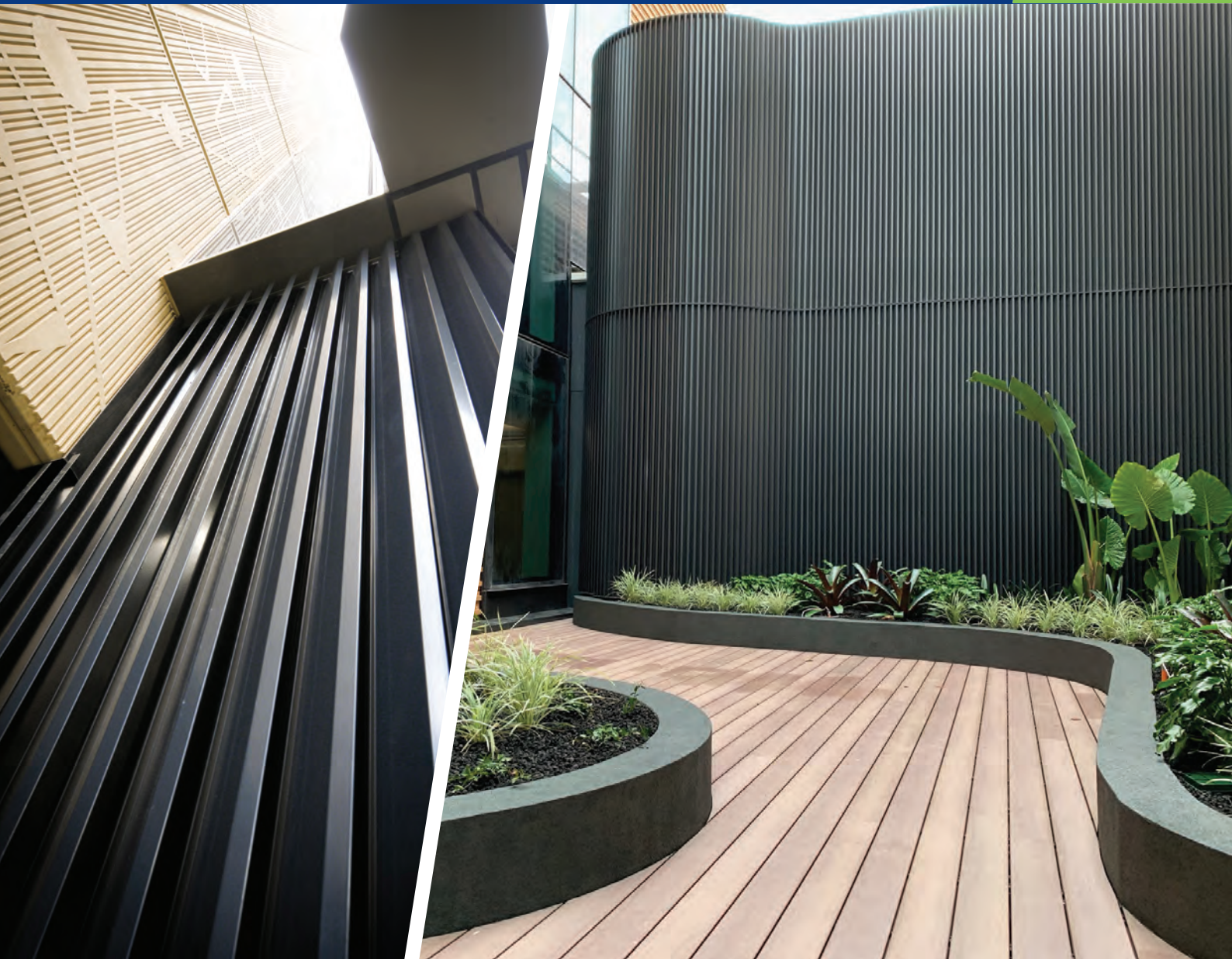
## EARLY CONTRACTOR INVOLVEMENT

Early Contractor Involvement (ECI) can save money, save time and ensure the best outcome. Get in touch with one of our experts at design stage and ensure the success of your project. Whether it is a highly bespoke & complex brief that requires testing & prototyping or a simple design needing clarification around detailing, to achieve a high-end premium finish, attention-to-detail is essential.

## PROFILES







## WOULD YOU LIKE TO KNOW MORE?

If you have any questions about this product, or if you would like to speak to a member of our expert team about how we can tailor a solution for you, call: **1300 165 678** or visit: [louvreciad.com](http://louvreciad.com)