



Bentley Series[®] Louvered Screens



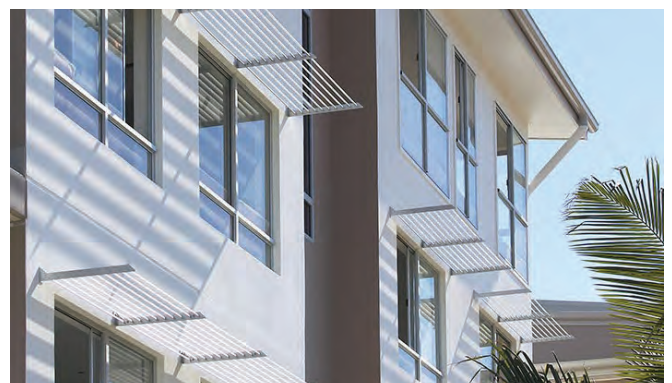
Louvreclad's Bentley Series[®] utilises lightweight panels or continuous blades to create straight, clean lines for a contemporary feature.

Distinctive Features + Diverse Applications + Multitude of Benefits:

- Excellent sun-shading performance
- Choice of lightweight panels or continuous blades
- The pitch and configuration of the blades can be varied
- Striking contemporary look
-

Attention to Detail:

- Maximum blade span: 1200mm
- 68% free open area at 60mm pitch



CONTEMPORARY FEATURE



Thinking outside for inside performance

DAY DESIGN

PRESSURE DROP TEST CERTIFICATE

Test 4203I-P



Test Specimen:

Bentley Series Louvre

Test Specimen Dimensions:

1800 mm (H) x 1200 mm (W) x 62 mm (D)

Specimen Specifications:

48% Open Area per Module

Blades @ 60 mm Pitch

Throat Height @ 41 mm

Test Location:

Twin Reverberation Rooms

National Acoustic Laboratories

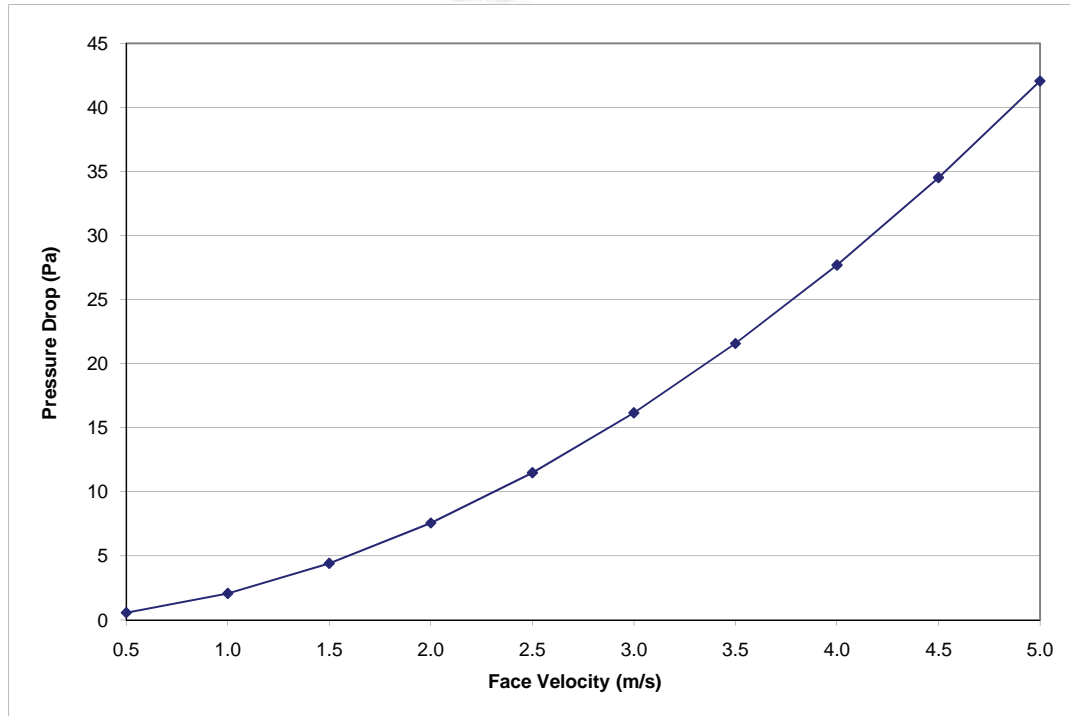
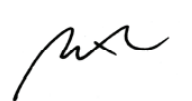
126 Greville Street, Chatswood NSW

Instrumentation:

- Vaisala Digital Barometer (Type PTB201AD)

- Kestrel Anemometer (Model K2000)

Face Velocity (m/s)	Pressure Drop (Pa)
0.5	0.6
1.0	2.1
1.5	4.4
2.0	7.6
2.5	11.5
3.0	16.2
3.5	21.6
4.0	27.7
4.5	34.5
5.0	42.1

Date of Test: Wednesday, 19 August 2009
Project Number: 4203I-P

Test Engineer: Alex Li, BE(Mech) Hons
For and on behalf of Day Design Pty Ltd

DRAFT SPECIFICATION

Louvres will be Louvreclad Bentley Series[®]. Blades will be mounted at [state pitch] mm pitch at [state Configuration].

Base Material & Finish

Louvres will be manufactured in [powder coated/anodised] aluminium finish in [state colour].

Installation and Mounting

Installation and mounting details will be designed in accordance with proprietary systems and recommendations as designed and manufactured by Louvreclad Pty. Ltd. Phone: 1300 165 678 Email: sales@louvreclad.com

Base Material Options

- Extruded Aluminium

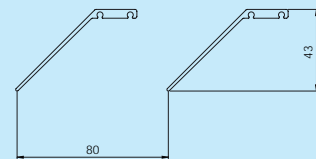
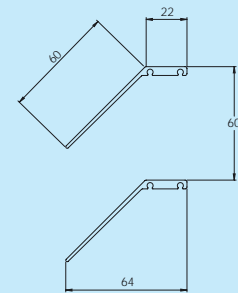
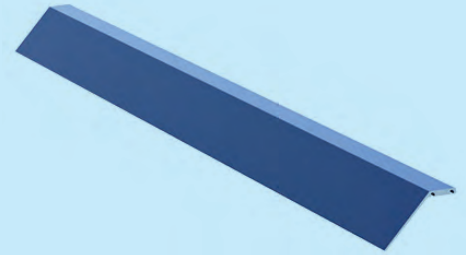
Finishes Available

Choose from the following range of finishes:

- complete powder coated range
- complete anodised range

Specialised coatings are also available on request.

PROFILES





WOULD YOU LIKE TO KNOW MORE?

If you have any questions about this product, or if you would like to speak to a member of our expert team about how we can tailor a solution for you, call: **1300 165 678** or visit: louvrecad.com