



Kensington Series® Waterproof Louvres



Louvreclad's Kensington Series® is a high weather performance three-pass louvre system which is highly tolerant to water penetration and therefore provides you with the security of knowing that water entry is virtually nil and airflow is still very efficient.

Distinctive Features:

- Three-pass louvre
- Aesthetically concealed fixing
- Exceptional weather performance
- Waterproof louvres
- Vertical or horizontal configuration

Attention to Detail:

- 50% free open area
- 62.5mm blade pitch
- Maximum blade span: 2000mm
- Maximum blade length: 6500mm
- Designed, engineered and certified for incidental live load.



EXCELLENT WEATHER PROTECTION

Performance Tested to AS/NZS 4740:2000



Rain Defence: Standard: Class A



Aerodynamics: Standard: Class 3

Note: Full CFD report available on request.



visit louvreciad.com phone 1300 165 678

PERFORMANCE DATA

Performance tested to AS/NZS 4740:2000 Louvreclad Kensington Series® is a three-pass weather louvre system offering Class A rain defence and Class 3 aerodynamics.

Choosing the right louvre to suit the rain defence requirements for your project is crucial if you have plant equipment or electrical units which cannot be water damaged.

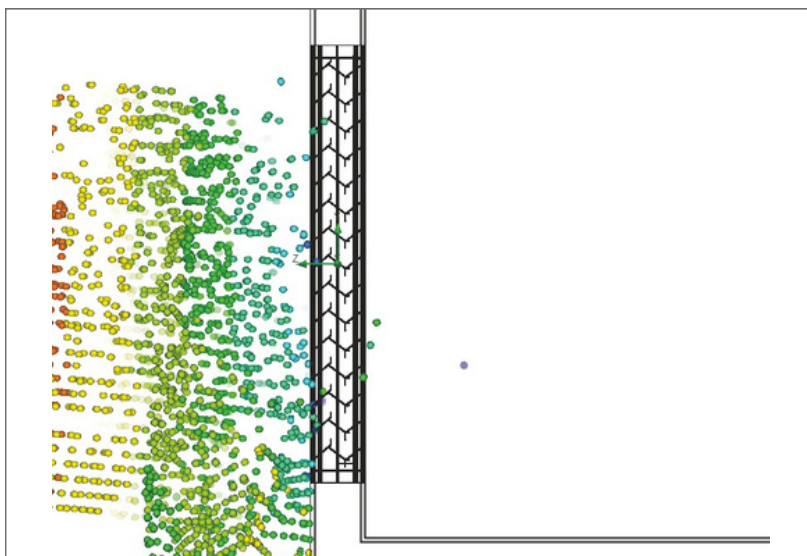
Coined our 'Storm Proof Louvre', Kensington Series® is guaranteed to ensure 100% effective rain defence, even in cyclone conditions. It is an ideal solution for medical, commercial and industrial projects where water protection is critical.

Rain Defence Tested to AS/NZS 4740:2000

Rain penetration analysis is tested to AS/NZS 4740:2000 and was conducted at a constant rain flow rate with ventilation rates ranging from 0.5m³/s to 3.5 m³/s.

The results concluded that the ventilator has excellent rain defence performance.

The average rain penetration effectiveness at core velocities from 0 to 3.5m/s was 100% effective, achieving a Class A rating.

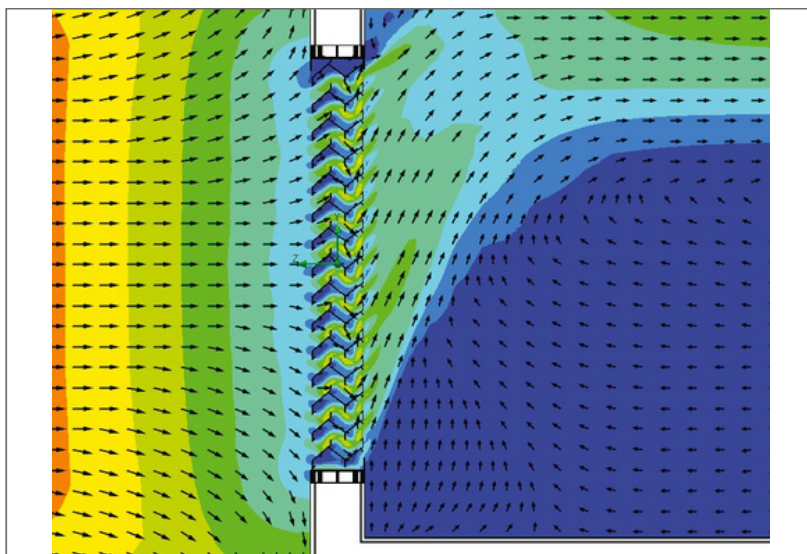


Rain penetration

Aerodynamics Tested to AS/NZS 4740:2000

This aerodynamics and discharge coefficient analysis was conducted to AS/NZS 4740:2000 with the ventilation rate ranging from 0.4m/s to 3.4m/s.

The test resulted in an average discharge coefficient of 0.358 and effective aerodynamic area of 0.15m², while achieving a Class 3 performance rating.



Velocity vectors

DRAFT SPECIFICATION

Louvres will be Louvreclad Kensington Series® with 50% free open area.
Performance tested to AS/NZS 4740:2000 Kensington Series® provides Class A rain defence and class 3 aerodynamics.

Base Material & Finish

Louvres will be manufactured in [powder coated/anodised] aluminium finish in [state colour].

Accessories

Louvres will be fitted with [nominate options/accessories from the selection].

Installation and Mounting

Installation and mounting details will be designed in accordance with proprietary systems and recommendations as designed and manufactured by Louvreclad Pty Ltd. Phone: 1300 165 678 Email: sales@louvreclad.com

Base Material

Extruded Aluminium

Finishes Available

Choose from the following range of finishes:

- complete powder coated range
- complete anodised range

Specialised coatings are also available on request.

Accessories

Bird/Vermin Mesh

Select from the following:

- galvanised
- galvanised powder coated
- stainless steel
- plastic
- perforated metal
- expanded metal

Insect Mesh

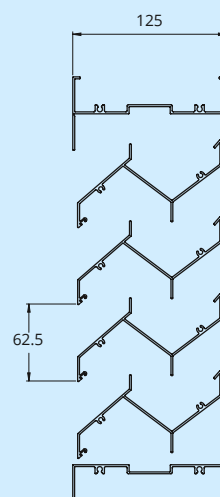
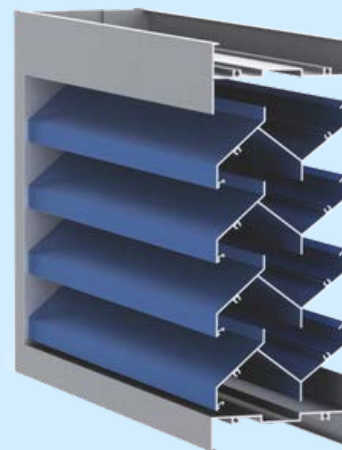
Select from the following:

- aluminium
- fibreglass
- stainless steel
- perforated metal

Other Louvre Accessories

- Security screens and bars
- Blanking sheets
- Volume control dampers
- Fire and smoke dampers
- Dust filters
- Acoustic baffles

PROFILES





WOULD YOU LIKE TO KNOW MORE?

If you have any questions about this product, or you would like to speak to a member of our expert team about how we can tailor a solution for you, call: 1300 165 678 or visit: louvreciad.com