



## Venus Series<sup>®</sup> Single Stage Full Chevron Louvre



LOUVRES

Louvreclad's Venus Series<sup>®</sup> is a single stage full chevron louvre system, ideal for plant screening applications and privacy screens.

### Distinctive Features:

- Blades can be mounted vertically or horizontally
- Full chevron louvre - provides privacy screening in apartment buildings or screening for unsightly plant and equipment
- Available in Colorbond<sup>®</sup> steel, Colorbond<sup>®</sup> Ultra & Metallic Range and Zinalume<sup>®</sup> standard range
- High impact and wind loadings
- Zero vision through louvre
- Designed, engineered and certified for incidental live load.

### Attention to Detail:

- Louvre material is 0.55 base metal thickness
- 42% free open area full chevron louvre
- 62.5mm Blade pitch
- Maximum blade span: 1800mm
- Maximum blade length: 7200mm
- Maximum side channel length: 4000mm



**USED AS A SECONDARY STAGE  
OR STANDALONE SYSTEM**

### Performance tested to AS/NZS 4740:2000



Rain Defence: Standard: Class C

Aerodynamics: Standard: Class 3

Note: Full CFD report available on request.

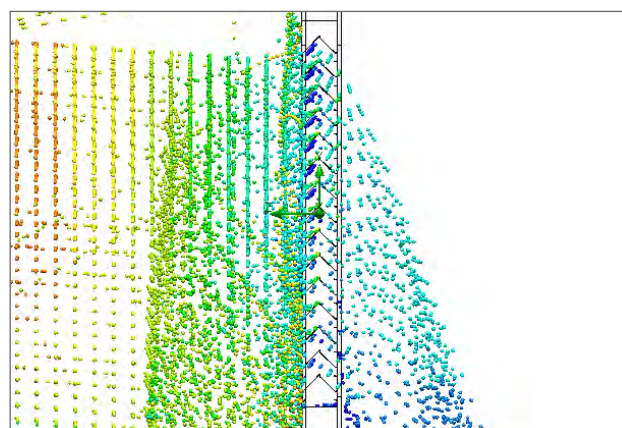
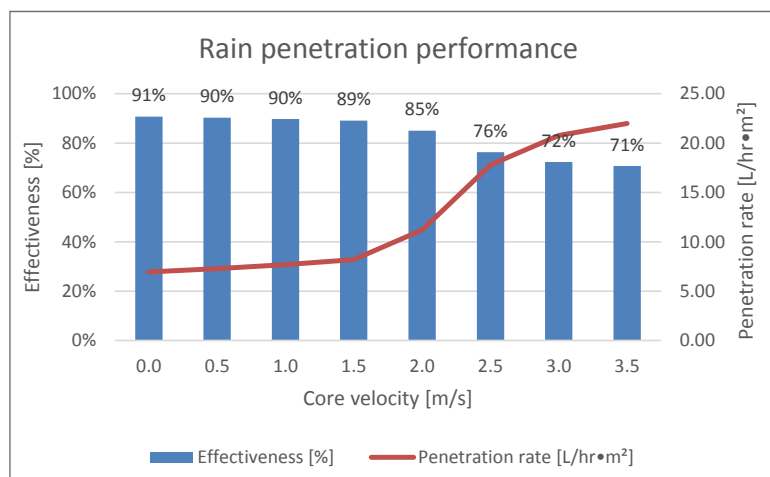


visit [louvreciad.com](http://louvreciad.com) phone 1300 165 678

## PERFORMANCE DATA

Louvreclad's Venus Series® is a single stage full chevron louvre system, ideal for plant screening applications, privacy blocking and security screening.

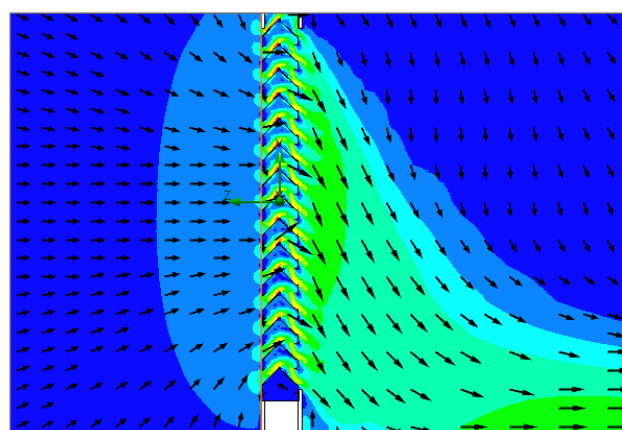
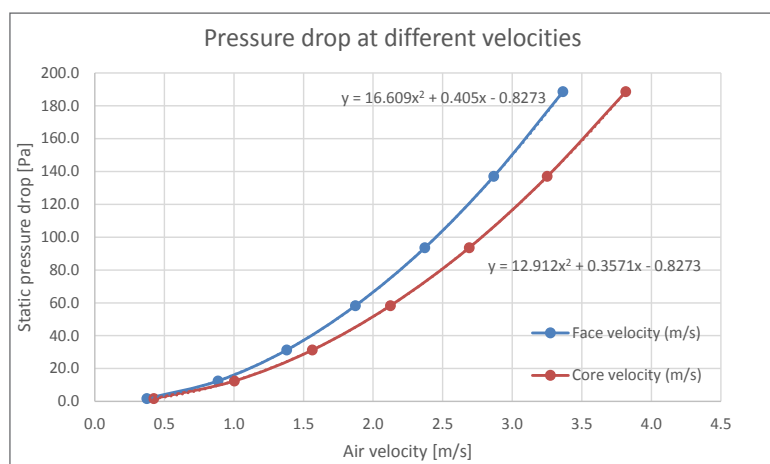
The Venus Series® is a roll formed Colorbond louvre with endless economic applications as the louvres can be mounted in any configuration, have zero vision and provide security, thus providing a wide range of benefits for screening unsightly plant equipment, balcony screening and car parks. This has a louvre appearance from either side, thus making it aesthetically pleasing in situations where both sides can be seen.



Rain penetration  
[Plan View]

### Rain Defence tested to AS/NZS 4740:2000

Rain penetration analysis is tested to AS/NZS 4740:2000 and was conducted at a constant rain flow rate with ventilation rates ranging from 0.5m<sup>3</sup>/s to 3.5 m<sup>3</sup>/s. The results concluded that the Venus Series® average rain penetration effectiveness at core velocities from 0 to 3.5m/s was 83% effective achieving a Class C rating.



Velocity vectors  
[Plan View]

### Aerodynamics tested to AS/NZS 4740:2000

This aerodynamics and discharge coefficient analysis was conducted to AS/NZS 4740:2000 with the ventilation rate ranging from 0.4m/s to 3.4m/s. Venus Series® chevron louvre performance resulted in an average discharge coefficient of 0.477 and the effective aerodynamic area was 0.20m<sup>2</sup> with Class 3 performance rating.

## DRAFT SPECIFICATION

Louvres will be Louvreclad Venus Series<sup>®</sup>.

Performance tested to AS/NZS 4740:2000, the Venus Series roll formed chevron louvre achieves a Class C for rain defence and Class 3 for Aerodynamics at velocities from 0.5-3.5m/s, and 42% free open area.

### Base Material & Finish

Louvres will be manufactured in [select base material] finish in [select colour].

### Accessories

Louvres will be fitted with [nominate options/accessories from the selection].

### Installation and Mounting

Installation and mounting details will be designed in accordance with proprietary systems and recommendations as designed and manufactured by Louvreclad Pty. Ltd. Phone: 1300 165 678 Email: sales@louvreclad.com

### Base Material Options

- Zinalume<sup>®</sup>
- Colorbond<sup>®</sup>

### Finishes Available

Choose from the following range of finishes:

- complete Colorbond<sup>®</sup> range

*Specialised coatings are also available on request.*

### Accessories

#### Bird/Vermin Mesh

Select from the following:

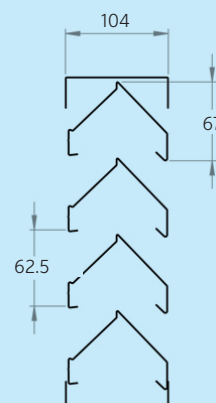
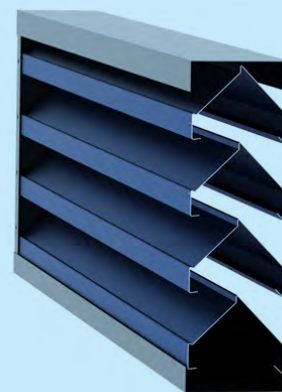
- galvanised
- stainless steel
- plastic
- perforated metal
- expanded metal

#### Insect Mesh

Select from the following:

- aluminium
- fibreglass

## PROFILES



## WOULD YOU LIKE TO KNOW MORE?

If you have any questions about this product, or if you would like to speak to a member of our expert team about how we can tailor a solution for you, call: **1300 165 678** or visit: [louvreclad.com](http://louvreclad.com)