



## Polaris Series® Perforated Screen



SCREENS

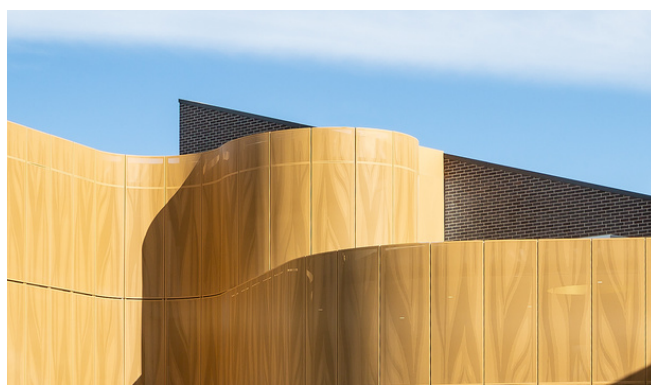
Louvreclad's Polaris Series® inclusion of perforated metal screens can create a striking feature while permitting preferred degrees of filtered natural light and vision.

### Distinctive Features:

- Standard or bespoke designs available
- Perforated Aluminium Plate
- Concealed fixing options available
- Powdercoat or anodise finish
- Bespoke sub-framing and fixing systems
- Compatible with Platinum Series®
- 100% Australian

### Attention to Detail:

- Typically 3mm aluminium
- Variety of perforation sizes and shapes, free open areas available
- Picture perf options available
- Designed, engineered and certified
- AS 1530.3 Test Certificate
- Low Maintenance
- Corrosion Resistant



**ARCHITECTURAL FEATURE  
SCREENS**



## DRAFT SPECIFICATION

Screens will be Louvreclad Polaris Series® (state pattern code number)

\* FULL DRAFT SPECIFICATION AVAILABLE ON REQUEST

### Base Material & Finish

Sunscreens will be manufactured in (powder coated/ anodised) aluminium finish in (state colour)

### Installation and Mounting

Installation and mounting details will be designed in accordance with proprietary systems and recommendations as designed and manufactured by Louvreclad. Phone: 1300 165 678 Email: sales@louvreclad.com

### Finishes Available

Choose from the following range of finishes: • complete powder coated range

### Base Material Options

- Aluminium

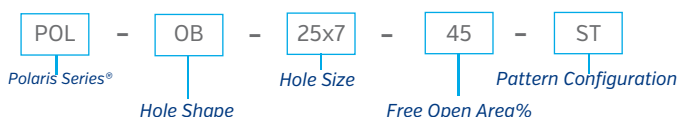
### Legend:

Shape	Shape code	Hole Size
Round	RO	
Square	SQ	
Rectangle	RE	
Triangle	TR	
Obround	OB	
Hexagonal	HE	

Open area %	Open area % code
1010	
2020	
3030	
3535	
4040	
4545	
5050	

Pattern Configuration	Pattern Configuration Code
Staggered	ST
Square Pattern	S90
Staggered rotated 60	S60
Square Pattern rotated 45	S45
Staggered rotated 30	S30

#### Example:



## PATTERN CONFIGURATIONS & DESIGN PARAMETERS

All perforated aluminum screens and samples are manufactured to order. Many variations of these patterns can be created by playing with the hole size, rotation, and open area of the pattern.

**Please note:** Minimum punch size must be at least 2 x the material thickness.

Minimum web thickness must be at least the sheet thickness.

### Economical Design:

To ensure the most economical design with minimal wastage it is best to work with standard aluminium sheet sizes.

Standard 3mm aluminium sheets:

3.00 X 1200 X 2400  
3.00 X 1500 X 2400  
3.00 X 1200 X 3000  
3.00 X 1500 X 3000  
3.00 X 1200 X 3600  
3.00 X 1500 X 3600

(Larger sheets available POA)

Sheet thickness is available in:

1.2mm  
1.6mm  
2.0mm  
3.0mm  
4.0mm

This is subject to punching parameters and engineering requirements.

### Unperforated borders:

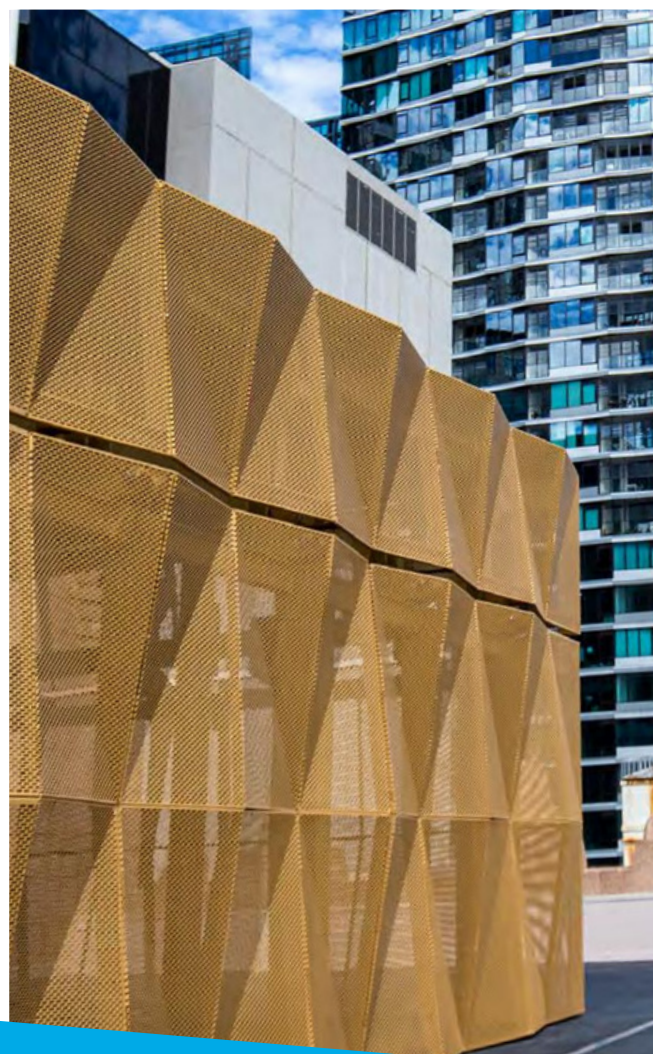
Please allow a 15mm min unperforated border to be specified depending on the required folds to suit the design intent.

### Aluminium Perforated Screen Weight

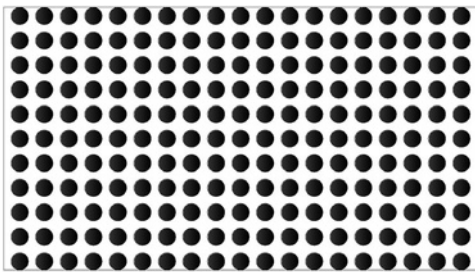
= [Length X Width X Thickness X Density] - Open area

Example: [A sheet of 2.400 X 1.200 X 3mm thick aluminium X 2.71 density of aluminium] - 41% = 13.8kg

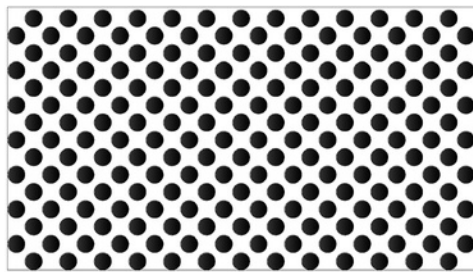
Please note this formula calculates an approx. weight & should be used as a guide only.



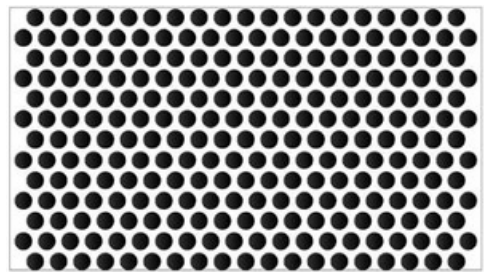




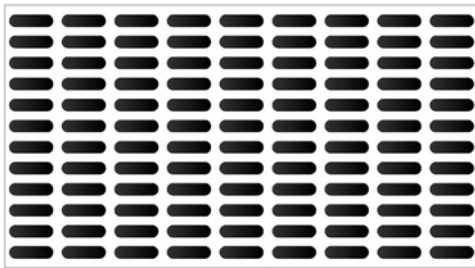
Round Hole Square Configuration



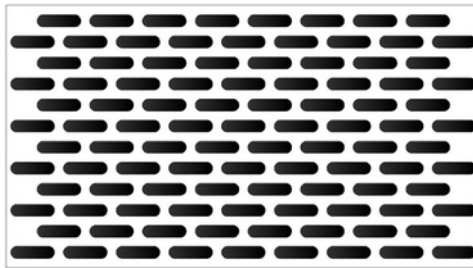
Round Hole Square Configuration  
rotated 45o



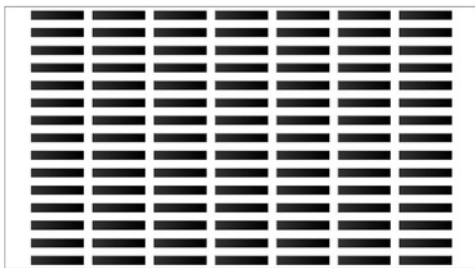
Round Hole Square Staggered Configuration



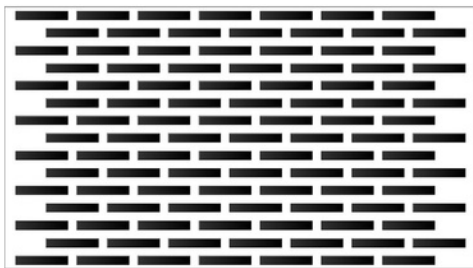
Obround Hole Square Configuration



Obround Hole Staggered Configuration



Rectangle Hole Square Configuration



Rectangle Hole Staggered Configuration

## Pattern Selection:

All Pattern configurations displayed in this fact sheet are examples only.

Each pattern can be specified with Hole type / hole size / rotation and free open area to suit your project design.

### Please note:

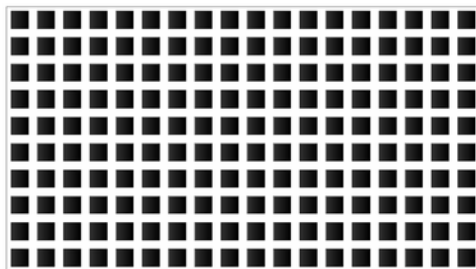
**Minimum punch size must be at least 2 x the material thickness.**

Please get in touch with a Louvreclad Design Consultant to assist with your selection.

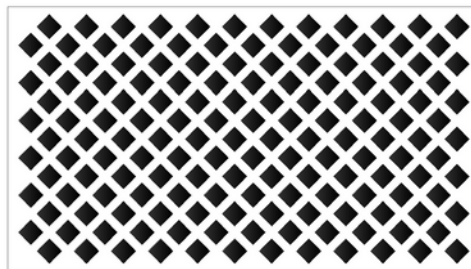




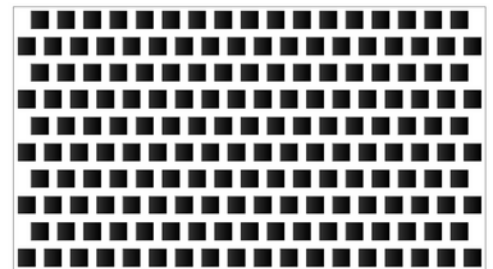
↑ Centenary State High School: POL-OB-25x7-45-ST



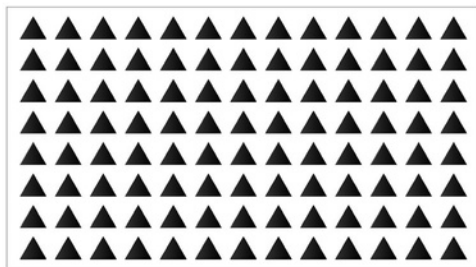
Square Hole Square Configuration



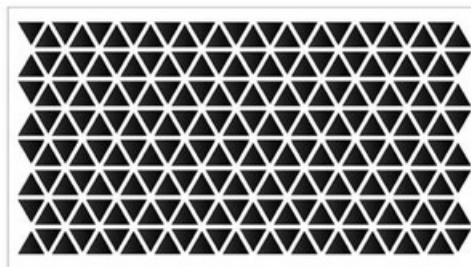
Square Hole Square Configuration  
rotated 45°



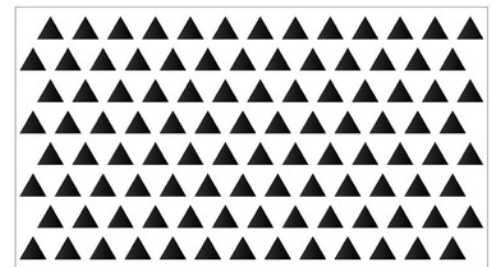
Square Hole Square Staggered Configuration



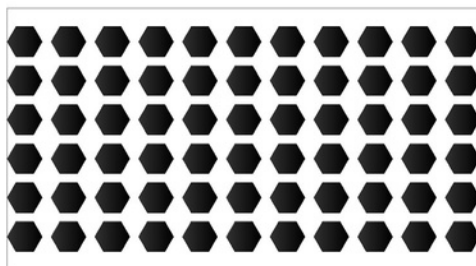
Triangle Hole Square Configuration



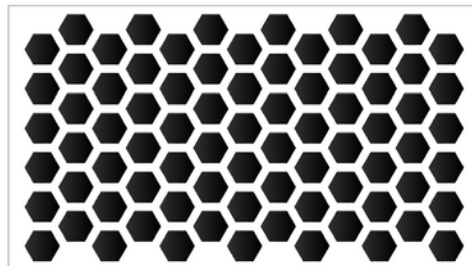
Triangle Hole Staggered Configuration  
rotated 60°



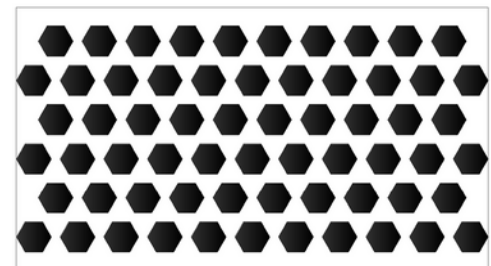
Triangle Hole Staggered Configuration



Hexagonal Hole Square Configuration



Hexagonal Hole Staggered Configuration  
rotated 30°



Hexagonal Hole Staggered Configuration





## Westconnex Tunnel Control Centre, Sydney NSW

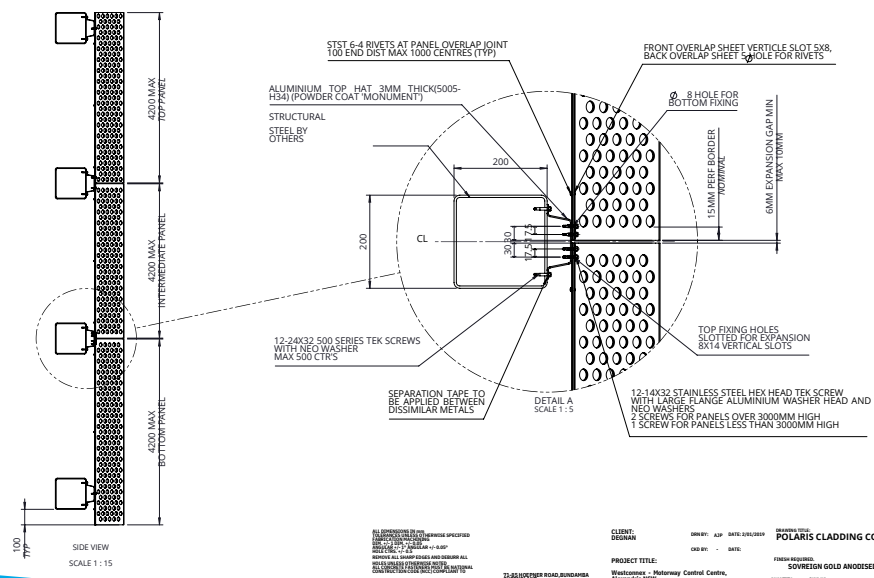
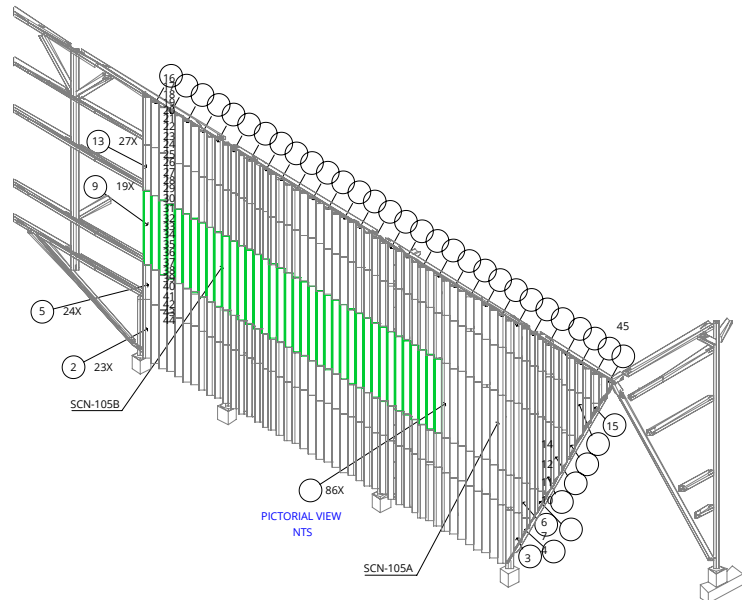
Louvreclad Polaris Series® bespoke folded perforated aluminium screen.

A stunning perforated metal façade that includes 2480m<sup>2</sup> and 1219 panels of perforated aluminium Polaris Series® screens all designed, engineered and manufactured by Louvreclad in-house. Louvreclad's ability to produce these panels in-house ensured efficient quality controlled manufacturing and shorter lead times that met the project requirements.

Once shipped to site, our experienced project team maintained efficiencies by utilizing specialist machinery that allowed for 6-8 panels to be installed at one time.

Polaris Code: POL-RO-25-30-ST

Green area highlighted below: POL-RO-25-50-ST







All the perforated aluminium has been finished in Interpon D2525 Sabel Core Ten texture, a natural copper-tone finish which compliments the surrounding natural landscape. One of the key concerns for designers when integrating screens into a façade is ensuring the screens are aligned with the window mullions.

A close-up, low-angle shot of a modern building's exterior. The image shows a dark, perforated metal facade with a grid of small, triangular holes. A large, dark-framed glass window is visible, reflecting the sky and surrounding greenery. The building is set against a clear blue sky with some light clouds. The perspective is from below, looking up at the building's corner.



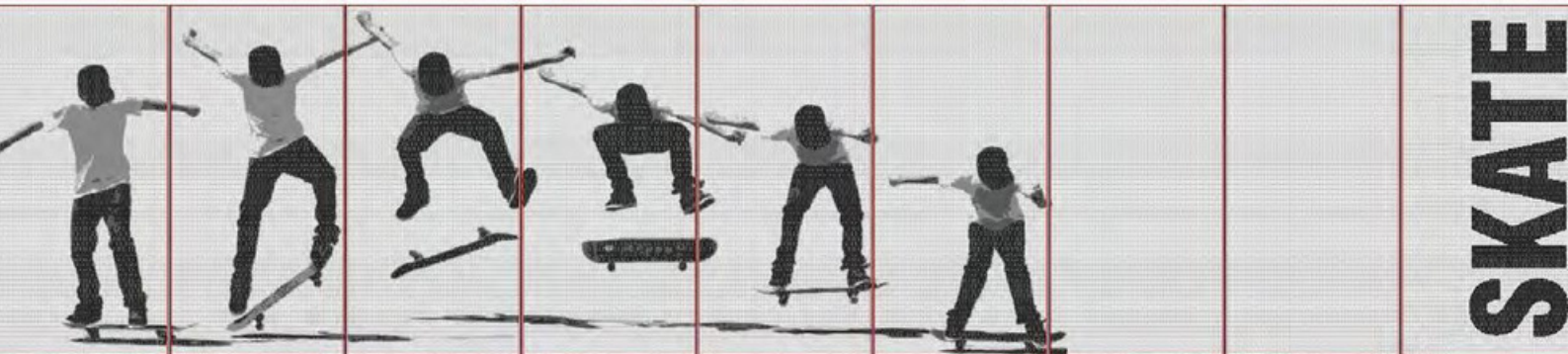




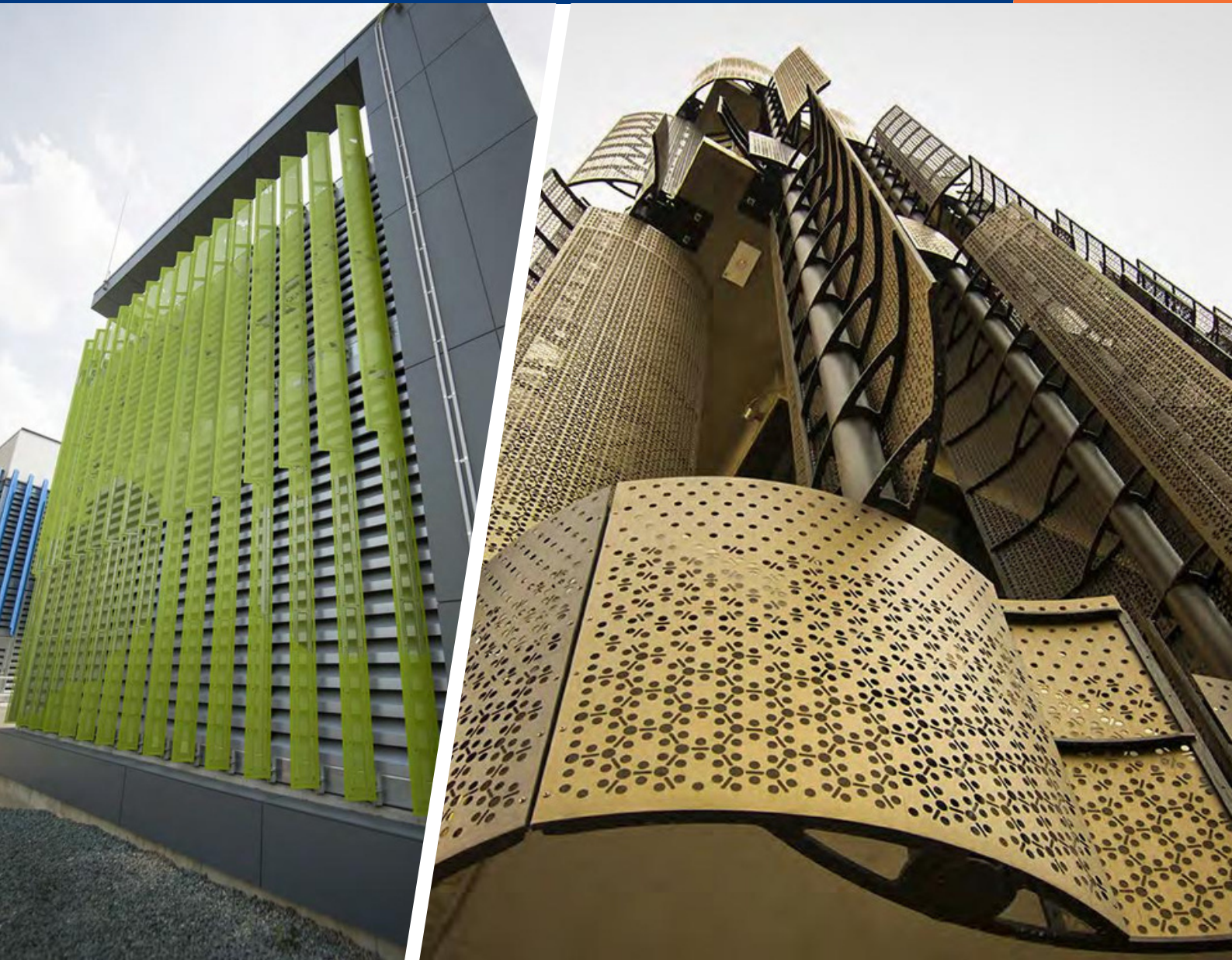
↑ Chifley Skate Park: Custom Pic Perf.

By utilising innovative technology, detailed imagery can be imprinted onto metal through different sized punched holes, offering added value to building exteriors with striking effectiveness.

- Custom-designed perforations available
- Can be used to display logos, pictures and words on exteriors
- Variety of perforation sizes and shapes, free open areas, and material types and thicknesses available







## **WOULD YOU LIKE TO KNOW MORE?**

If you have any questions about this product, or if you would like to speak to a member of our expert team about how we can tailor a solution for you, call: 1300 165 678 or visit: [louvreciad.com](http://louvreciad.com)