



## Neptune Series<sup>®</sup> Louvre Doors & Grilles



Louvreclad's Neptune Series<sup>®</sup> louvre provides a slimline external appearance. This louvre is commonly used on louvred doors and small grilles, and where a general screening and ventilation louvre is required.

### Distinctive Features:

- Suitable for plantroom screening and louvred doors and grilles
- Extruded aluminium construction
- Doors can be installed with any specified hardware that is compatible to the frame type

### Attention to Detail:

- 50% free open area
- Maximum blade span: 1200mm
- Integrates seamlessly with Ellenborough Series
- Designed, engineered and certified for incidental live load.



**SLIMLINE APPEARANCE**

### Performance Tested to AS/NZS 4740:2000



Rain Defence: Standard: Class D

Aerodynamics: Standard: Class 2

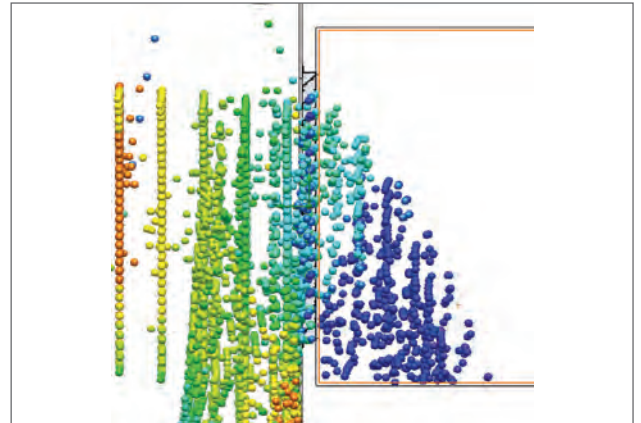
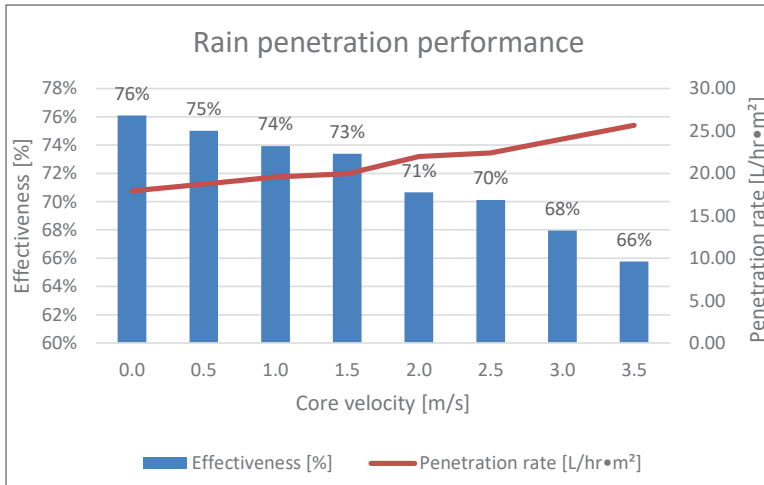
Note: Full CFD report available on request.



visit [louvrecad.com](http://louvrecad.com) phone 1300 165 678

## PERFORMANCE DATA

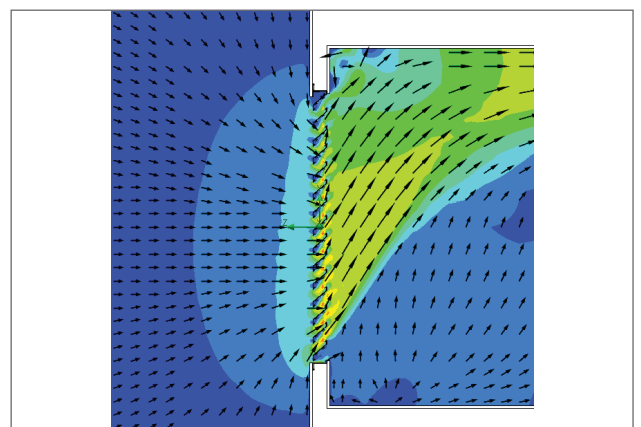
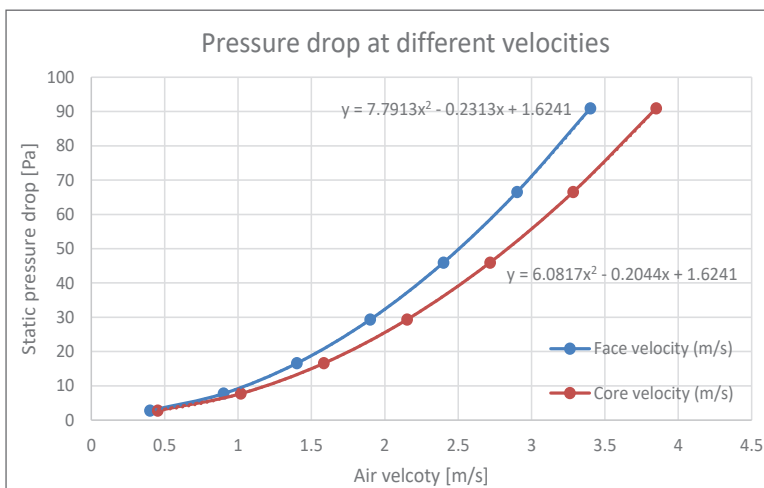
Louvreclad's Neptune Series 62.5mm pitch aluminium louvre achieves a Class D for rain defence and Class 2 for aerodynamics. This Classic design is well suited to louvre doors and integrates seamlessly with Ellenborough Series chevron louvres.



Rain penetration

### Rain Defence tested to AS/NZS 4740:2000

Rain penetration analysis is tested to AS/NZS 4740:2000 and was conducted at a constant rain flow rate with ventilation rates ranging from 0.5m3/s to 3.5 m3/s. The results concluded that the ventilator has low rain defence performance and is summarized in Table 2. The Neptune Series® Standard louvre's average rain penetration effectiveness at core velocities from 0 to 3.5m/s was 72% giving it a Class D rating.



Velocity vectors

### Aerodynamics tested to AS/NZS 4740:2000

This aerodynamics and discharge coefficient analysis was conducted to AS/NZS 4740:2000 with the ventilation rate ranging from 0.4m/s to 3.4m/s. Table 2 summarizes the ventilator's aerodynamic performance at different face velocities. The Neptune Series® Standard louvre performance resulted in an average discharge coefficient of 0.556, effective aerodynamic performance of 0.25 resulting in a Class 2 performance rating.

## DRAFT SPECIFICATION

Louvres will be Louvreclad Neptune Series<sup>®</sup> 62.5mm pitch aluminium louvre. The louvre is performance tested to AS/NZS 4740:2000 with ventilation rates ranging from 0.4m/s to 3.4m/s it achieves a Class D for rain defence and Class 2 for aerodynamics and 50% free open area.

### Base Material & Finish

Louvres will be manufactured in [powder coated/anodised] aluminium finish in [state colour]

### Accessories

Louvre's will be fitted with [nominate options/accessories from the selection].

### Installation and Mounting

Installation and mounting details will be designed in accordance with proprietary systems and recommendations as designed and manufactured by Louvreclad Pty. Ltd. Phone: 1300 165 678 Email: sales@louvreclad.com

### Base Material Options

- Extruded Aluminium

### Finishes Available

Choose from the following range of finishes:

- complete powder coated range
- complete anodised range

*Specialised coatings are also available on request.*

### Accessories

#### Bird/Vermin Mesh

Select from the following:

- galvanised
- stainless steel

#### Insect Mesh

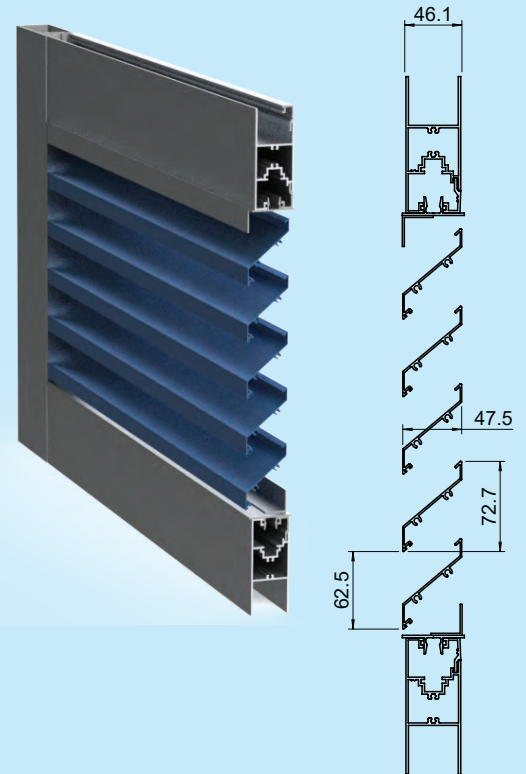
Select from the following:

- aluminium
- stainless steel

### Other Louvre Accessories

- Security screens and bars
- Blanking sheets
- Volume control dampers
- Fire and smoke dampers
- Dust filters

## PROFILES



## WOULD YOU LIKE TO KNOW MORE?

If you have any questions about this product, or if you would like to speak to a member of our expert team about how we can tailor a solution for you, call: **1300 165 678** or visit: [louvreclad.com](http://louvreclad.com)