



## Neptune Series<sup>®</sup> Louvre Doors & Grilles



Louvreclad's Neptune Series<sup>®</sup> louvre provides a slimline external appearance. This louvre is commonly used on louvred doors and small grilles, where a protective louvre is required to block out external elements.

### Distinctive Features + Diverse Applications + Multitude of Benefits:

- Suitable for louvred doors and grilles
- Extruded aluminium construction
- Doors can be installed with any specified hardware that is compatible to the frame type

### Attention to Detail:

- 45% free open area
- Maximum blade span: 1000mm
- Designed, engineered and certified for incidental live load.



**SLIMLINE APPEARANCE**

### Performance Tested to AS/NZS 4740:2000



Rain Defence: Standard: Class D

Aerodynamics: Standard: Class 1

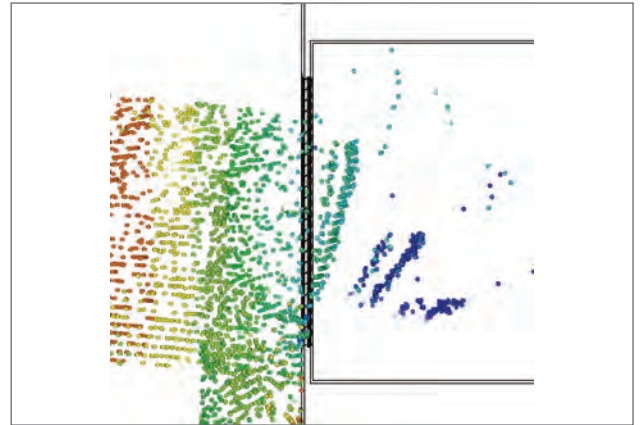
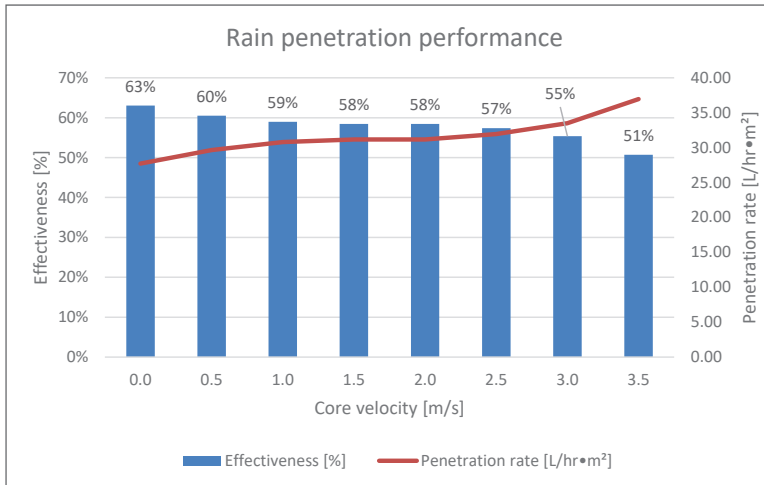
Note: Full CFD report available on request.



visit [louvreciad.com](http://louvreciad.com) phone 1300 165 678

## PERFORMANCE DATA

Louvreclad's Neptune Series 40mm pitch aluminium louvre achieves a Class D for rain defence and Class 1 for aerodynamics. Only 40mm in depth, this slimline louvre is well suited for louvre doors and smaller louvred grills where maximum air flow is important and rain defence is less important.

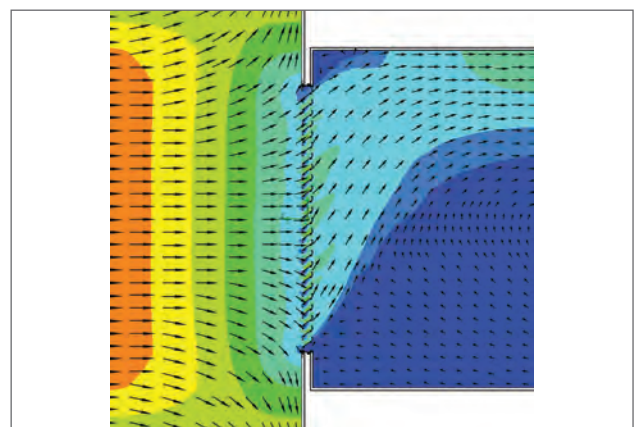
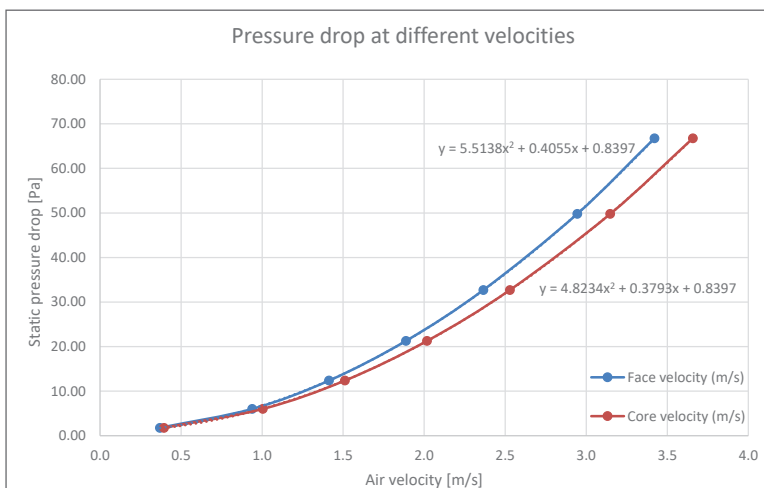


Rain penetration

### Rain Defence tested to AS/NZS 4740:2000

Rain penetration analysis is tested to AS/NZS 4740:2000 and was conducted at a constant rain flow rate with ventilation rates ranging from 0.5m3/s to 3.5 m3/s. The results concluded that the ventilator has low rain defence performance and is summarized in Table 2.

The Neptune Series® Standard louvre's average rain penetration effectiveness at core velocities from 0 to 3.5m/s was 58%



Velocity vectors

### Aerodynamics tested to AS/NZS 4740:2000

This aerodynamics and discharge coefficient analysis was conducted to AS/NZS 4740:2000 with the ventilation rate ranging from 0.4m/s to 3.4m/s. Table 2 summarizes the ventilator's aerodynamic performance at different face velocities.

The Neptune Series® Standard louvre performance resulted in an average discharge coefficient of 0.75 and the effective aerodynamic performance was 0.30 while achieving a Class 1 performance rating.

## DRAFT SPECIFICATION

Louvres will be Louvreclad Neptune Series® 40mm pitch aluminium louvre. The louvre should be performance tested to AS/NZS 4740:2000 and achieve a Class D for rain deflection and Class 1 for aerodynamics at velocities from 0.5-3.5m/s with 45% free open area.

### Base Material & Finish

Louvres will be manufactured in [powder coated/anodised] aluminium finish in [state colour]

### Accessories

Louvre's will be fitted with [nominate options/accessories from the selection].

### Installation and Mounting

Installation and mounting details will be designed in accordance with proprietary systems and recommendations as designed and manufactured by Louvreclad Pty. Ltd. Phone: 1300 165 678 Email: sales@louvreclad.com

### Base Material Options

- Extruded Aluminium

### Finishes Available

Choose from the following range of finishes:

- complete powder coated range
- complete anodised range

*Specialised coatings are also available on request.*

### Accessories

#### Bird/Vermin Mesh

Select from the following:

- galvanised
- galvanised powder coated
- stainless steel
- plastic
- perforated metal
- expanded metal

#### Insect Mesh

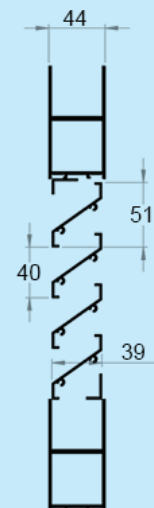
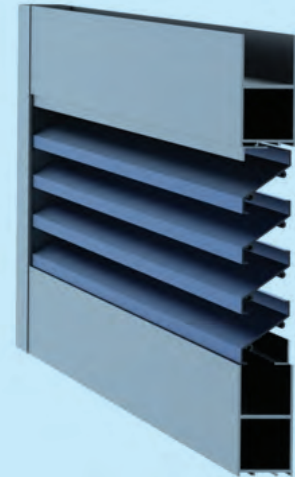
Select from the following:

- aluminium
- fibreglass
- stainless steel
- perforated metal

### Other Louvre Accessories

- Security screens and bars

## PROFILES



## WOULD YOU LIKE TO KNOW MORE?

If you have any questions about this product, or if you would like to speak to a member of our expert team about how we can tailor a solution for you, call: **1300 165 678** or visit: [louvreclad.com](http://louvreclad.com)