



KOOKAI

# Bremer Series® Louvre Sunscreen System

Louvreclad Bremer Series® are slim-line aluminium louvre blades, ideal for horizontal awnings or vertical screens. Non-combustible, customisable pitch, and engineered for durability. Perfect for a fine-line linear aesthetic.

## Features

### PERFORMANCE

#### Superior Sun-Shading

The Bremer Series® features a 45x11mm elliptical louvre with variable blade pitch and angle, offering excellent sun-shading performance for commercial buildings and schools.

### AESTHETICS

#### Slim-Line Design

Provides fine, clean lines and a light, linear aesthetic. Available in powder-coated or anodised finishes, it complements contemporary architecture beautifully.

### DESIGN

#### Versatile Installation

Suitable for horizontal window shading, vertical screens, and awnings. Customisable blade pitch and angle ensure functionality and aesthetic appeal.

## Specifications

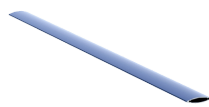
### INSTALLATION

Installation and mounting details will be designed in accordance with proprietary systems and recommendations as designed and manufactured by Louvreclad.

# Explore the profile options

## Bremer Series®

45x11mm aluminium  
elliptical blades



45 mm  
DEPTH

11 mm  
THICKNESS

1075 mm  
MAX SPAN

0.4 kg/metre  
WEIGHT

## Technical Data Disclaimer

- Indicative maximum span provided are based on generic permissible design wind pressure of 2kPa.
- Span values and product technical information provided are subjected to variance by project specific requirements & influence factors such building location, terrain category & local pressure effects.
- Span values provided are based on typical scenario where product specified are fixed at one end; simply supported at the other end and in either horizontal or vertical orientation.
- If the product specified is required to function as barrier for fall protection or as trafficable element, maximum span and pitch nominated may be reduced.
- Spans values provided could be influenced and reduced when used in dynamically sensitive wind environment.
- For project specific product selection or preliminary design & engineering consultation, please contact 1300 165 678 or [sales@louvreclad.com](mailto:sales@louvreclad.com) to arrange or book a meeting.

**DAY  
DESIGN**

**PRESSURE DROP  
TEST CERTIFICATE**

**Test 4203J-P**



**Test Specimen:**

**Bremer Series Louvre**

**Test Specimen Dimensions:**

1800 mm (H) x 1200 mm (W) x 32 mm (D)

**Specimen Specifications:**

48% Open Area per Module

Blades @ 40 mm Pitch & 45° angle

Throat Height @ 20 mm

**Test Location:**

Twin Reverberation Rooms

National Acoustic Laboratories

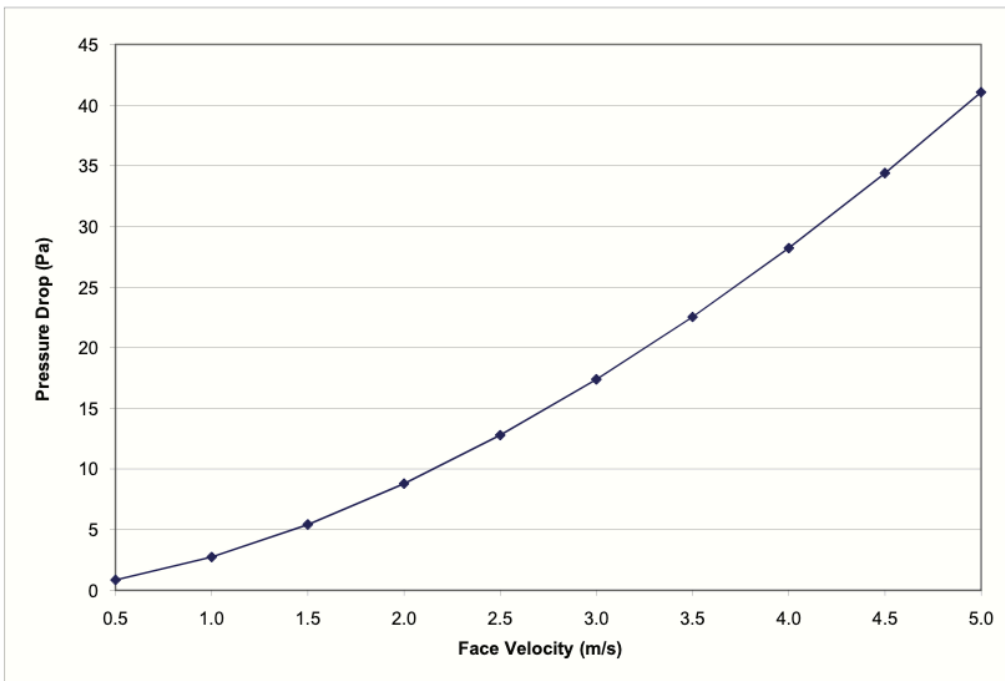
126 Greville Street, Chatswood NSW

**Instrumentation:**

- Vaisala Digital Barometer (Type PTB201AD)

- Kestrel Anemometer (Model K2000)

Face Velocity (m/s)	Pressure Drop (Pa)
0.5	0.9
1.0	2.7
1.5	5.4
2.0	8.8
2.5	12.8
3.0	17.4
3.5	22.5
4.0	28.2
4.5	34.4
5.0	41.1



**Date of Test:** Tuesday, 25 August 2009  
**Project Number:** 4203J-P

**Test Engineer:** Alex Li, BE(Mech) Hons  
For and on behalf of Day Design Pty Ltd



Made to Perform

1300 165 678

sales@louvrecad.com

louvrecad.com





## Inspire with Quality

As leaders in the building envelope market, we are known for exceptional quality and lasting value. Our credibility, wealth of knowledge, and unmatched competence enable us to inspire exterior solutions that look good and perform better.



## The MadeRight Guarantee

Following our proven process enables us to develop solutions we're proud to put our mark of quality to. We guarantee that all projects will be delivered in a timely manner, be on specification, engineered to Australian standards and finished to the highest quality.



## Made to Perform

Louvreclad solutions are made to last and manufactured on-site using high-quality Australian aluminium and steel. As an organisation we are driven to get a thousand things right everyday to achieve our vision to be the face of Australian Building. Our facades are not here to be average, they are here to perform – and so are we.



Made to Perform

1300 165 678

[sales@louvreciad.com](mailto:sales@louvreciad.com)

[louvreciad.com](http://louvreciad.com)