



Delta Series[®] Two Stage Louvres



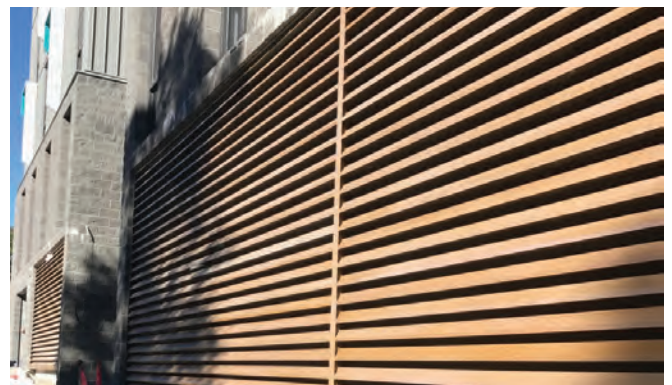
Louvreclad's Delta Series[®] is a high-strength rollformed perforated high tensile steel louvre that ensures high security while allowing good ventilation. Alternatively, Delta can be specified without perforations for architectural features such as cladding or a privacy screen, or where blanked louvres are required.

Distinctive Features + Diverse Applications + Multitude of Benefits:

- Available in a wide range of colours of the Colorbond[®] steel, Colorbond[®] Ultra & Metallic and the Zinalume[®] standard range
- Ideal for inverted louvre situations (eg plant screens)
- Provide blanked louvres and cladding when unperforated
- Perforations eliminate the need for bird/vermin mesh
- High-strength perforated louvre with excellent impact resistance

Attention to Detail:

- 42% free open area
- 125mm blade pitch (first stage)
- 62.5mm blade pitch (second stage)
- Maximum blade span: 2400
- Maximum blade length: 7200mm
- Maximum side channel length: 4000mm
- R_w rating of 3



SECURITY AND VENTILATION



Thinking outside for inside performance

DRAFT SPECIFICATION

Louvres will be Louvreclad Delta Series[®] two-stage louvre with 42% free open area.

Base Material & Finish

Louvres will be manufactured using 0.55mm thick pre-finished high tensile steel [select base material] in [select colour].

Accessories

Louvres will be fitted with [nominate options/accessories from the selection].

Installation and Mounting

Installation and mounting details will be designed in accordance with proprietary systems and recommendations as designed and manufactured by Louvreclad Pty. Ltd. Phone: 1300 165 678 Email: sales@louvrecad.com

Base Material Options

- Zincalume[®]
- Colorbond[®]
- Galvabond[®]

Accessories

Insect Mesh

Select from the following:

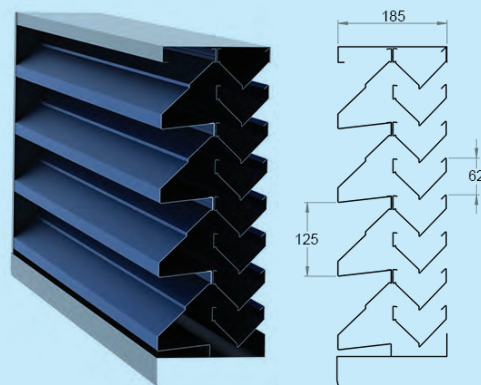
- aluminium
- fibreglass
- stainless steel
- perforated metal

Other Louvre Accessories

- Security screens and bars
- Blanking
- Volume control dampers
- Fire and smoke dampers
- Dust filters
- Single Stage Louvres

PROFILES

Delta Series[®] two-stage louvre



DAY DESIGN

PRESSURE DROP TEST CERTIFICATE

Test 4203R-P



Test Specimen:

Delta 125 / Venus 2-Stage Louvre

Test Specimen Dimensions:

1800 mm (H) x 1200 mm (W) x 184 mm (D)

Specimen Specifications:

48% Open Area per Module
Blades @ 125 mm Pitch (Delta) & 62.5 mm Pitch (Venus)
Throat Height @ 51 mm (Delta) & 26 mm (Venus)

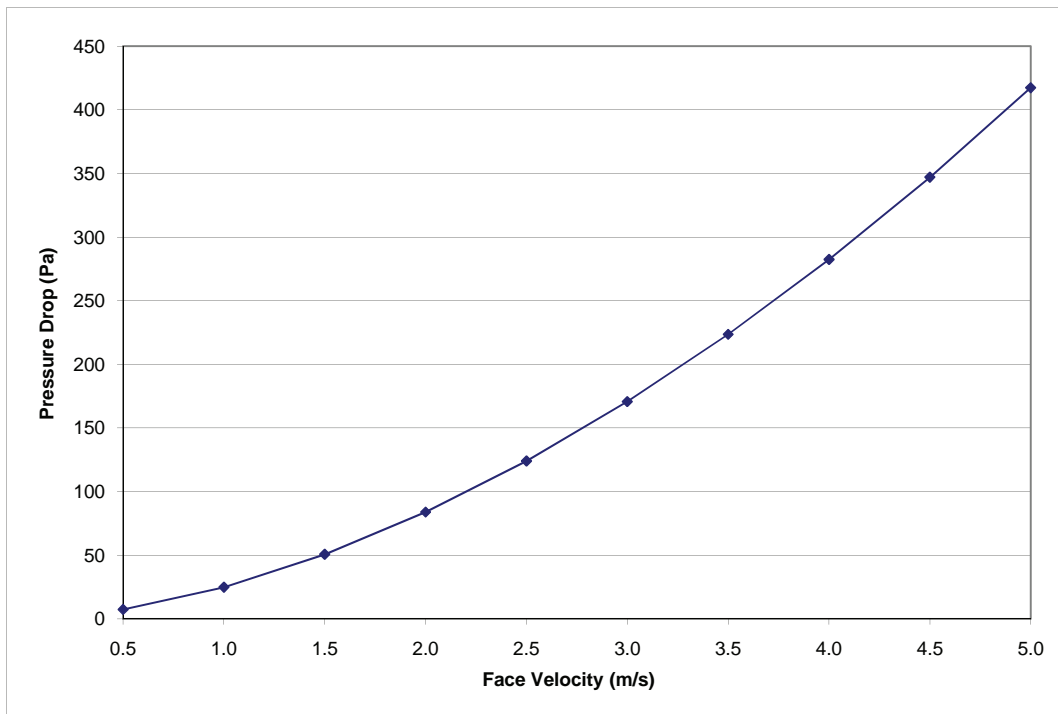
Test Location:

Twin Reverberation Rooms
National Acoustic Laboratories
126 Greville Street, Chatswood NSW

Instrumentation:

- Vaisala Digital Barometer (Type PTB201AD)
- Kestrel Anemometer (Model K2000)

Face Velocity (m/s)	Pressure Drop (Pa)
0.5	7.4
1.0	25.0
1.5	50.7
2.0	83.9
2.5	124.0
3.0	170.7
3.5	223.5
4.0	282.3
4.5	347.0
5.0	417.2




Date of Test: Wednesday, 19 August 2009
Project Number: 4203R-P

Test Engineer: Alex Li, BE(Mech) Hons
For and on behalf of Day Design Pty Ltd

Delta Series[®] Two Stage Louvres



i WOULD YOU LIKE TO KNOW MORE?

If you have any questions about this product, or if you would like to speak to a member of our expert team about how we can tailor a solution for you, call: **1300 165 678** or visit: louvrecad.com