



Delta Series[®] Single Stage Louvres



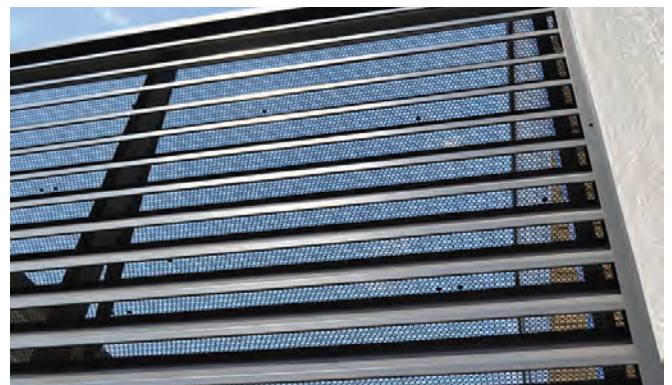
Louvreclad's Delta Series[®] is a high-strength rollformed perforated high tensile steel louvre that ensures high security while allowing good ventilation. Alternatively, Delta Series[®] can be specified without perforations for architectural features such as cladding or a privacy screen, or where blanked louvres are required.

Distinctive Features + Diverse Applications + Multitude of Benefits:

- Available in a wide range of colours of the Colorbond[®] steel, Colorbond[®] Ultra & Metallic and the Zinalume[®] standard range
- Ideal for inverted louvre situations (eg plant screens)
- Provide blanked louvres and cladding when unperforated
- Perforations eliminate the need for bird/vermin mesh
- High-strength perforated louvre with excellent impact resistance

Attention to Detail:

- 48% free open area
- 125mm blade pitch
- Maximum blade span: 2400
- Maximum blade length: 7200mm
- Maximum side channel length: 4000mm
- R_w rating of 3



SECURITY AND VENTILATION



Thinking outside for inside performance

DRAFT SPECIFICATION

Louvres will be Louvreclad Delta Series[®] single stage louvre with 48% free open area.

Base Material & Finish

Louvres will be manufactured using 0.55mm thick pre-finished high tensile steel [select base material] in [select colour].

Accessories

Louvres will be fitted with [nominate options/accessories from the selection].

Installation and Mounting

Installation and mounting details will be designed in accordance with proprietary systems and recommendations as designed and manufactured by Louvreclad Pty. Ltd. Phone: 1300 165 678 Email: sales@louvreclad.com

Base Material Options

Zincalume[®]
Colorbond[®]
Galvabond[®]

Accessories

Insect Mesh

Select from the following:

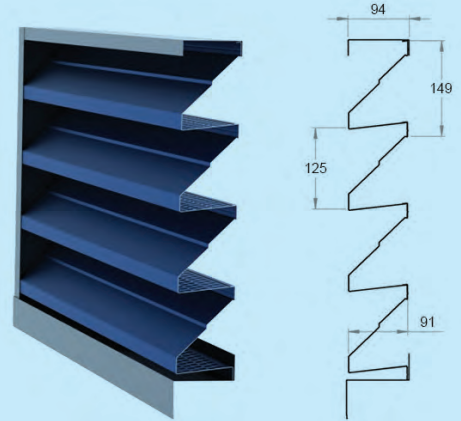
- aluminium
- fibreglass
- stainless steel
- perforated metal

Other Louvre Accessories

- Security screens and bars
- Blanking
- Volume control dampers
- Fire and smoke dampers
- Dust filters
- 2nd Stage Louvres

PROFILES

Delta Series[®] standard louvre



DAY DESIGN

PRESSURE DROP TEST CERTIFICATE

Test 4203H-P



Test Specimen:

Delta 125 Series Louvre

Test Specimen Dimensions:

1800 mm (H) x 1200 mm (W) x 92 mm (D)

Specimen Specifications:

48% Open Area per Module

Blades @ 125 mm Pitch

Throat Height @ 51 mm

Test Location:

Twin Reverberation Rooms

National Acoustic Laboratories

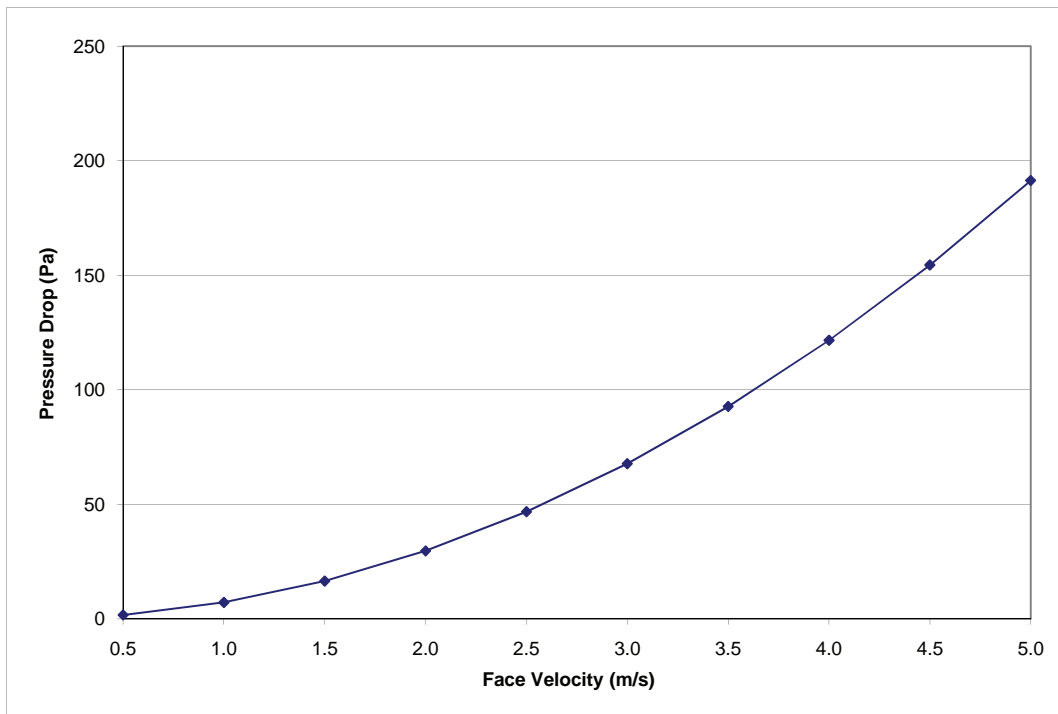
126 Greville Street, Chatswood NSW

Instrumentation:

- Vaisala Digital Barometer (Type PTB201AD)

- Kestrel Anemometer (Model K2000)

| Face Velocity (m/s) | Pressure Drop (Pa) |
|---------------------|--------------------|
| 0.5 | 1.8 |
| 1.0 | 7.3 |
| 1.5 | 16.6 |
| 2.0 | 29.8 |
| 2.5 | 46.8 |
| 3.0 | 67.8 |
| 3.5 | 92.7 |
| 4.0 | 121.6 |
| 4.5 | 154.5 |
| 5.0 | 191.3 |




Date of Test: Wednesday, 19 August 2009
Project Number: 4203H-P

Test Engineer: Alex Li, BE(Mech) Hons
For and on behalf of Day Design Pty Ltd

**DAY
DESIGN**

**ACOUSTIC LOUVRE
INSERTION LOSS
TEST CERTIFICATE**

Test 4203H



Test Specimen:

Delta 125 Series Louvre

Australian Standards:

Measured according to AS 1191-2002

Test Specimen Dimensions:

1800 mm (H) x 1200 mm (W) x 92 mm (D)

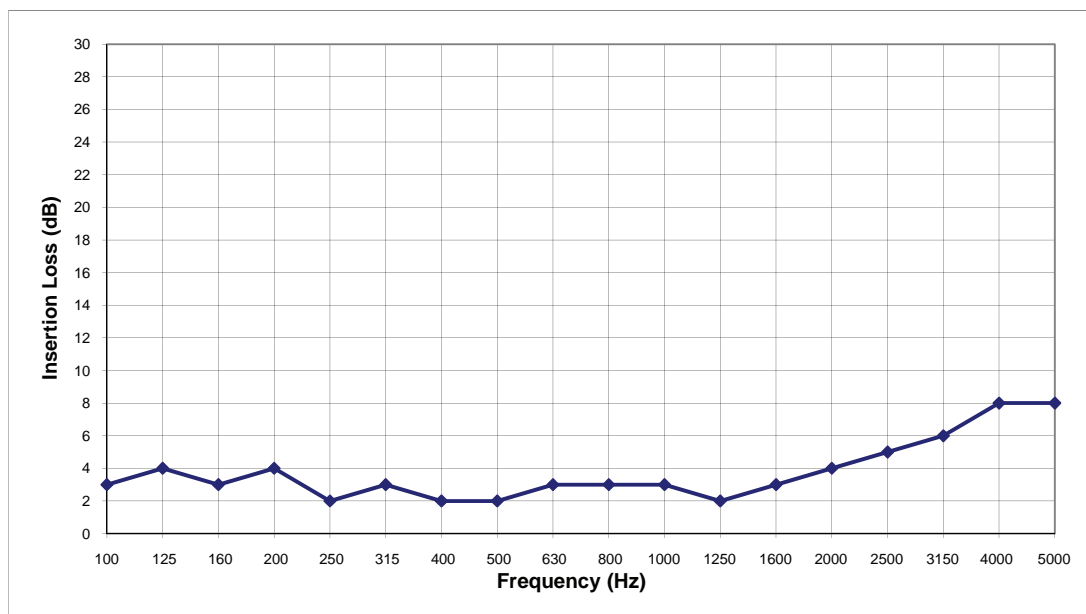
Test Location:

Twin Reverberation Rooms
National Acoustic Laboratories
126 Greville Street, Chatswood NSW

Instrumentation:

- Brüel and Kjær Two Channel Pulse Analyser (assembly 2825, 7521, 2 x 3015)
- Brüel and Kjær Cathode Follower type 2639
- Brüel and Kjær Cathode Follower type 2669
- Brüel and Kjær Microphone type 4144
- Brüel and Kjær Microphone type 4179
- Brüel and Kjær Sound Level Calibrator type 4231
- Yamaha Professional Sound Sources type S50

| Frequency - Hz | Insertion Loss - dB | |
|----------------|---------------------|------------|
| | 1/3 Octave | 1/1 Octave |
| 100 | 3 | 4 |
| 125 | 4 | |
| 160 | 3 | |
| 200 | 4 | 3 |
| 250 | 2 | |
| 315 | 3 | |
| 400 | 2 | 2 |
| 500 | 2 | |
| 630 | 3 | |
| 800 | 3 | 3 |
| 1000 | 3 | |
| 1250 | 2 | |
| 1600 | 3 | 4 |
| 2000 | 4 | |
| 2500 | 5 | |
| 3150 | 6 | 9 |
| 4000 | 8 | |
| 5000 | 8 | |




Date of Test: Tuesday, 25 August 2009
Project Number: 4203H

Test Engineer: Alex Li, BE(Mech) Hons
For and on behalf of Day Design Pty Ltd

Delta Series[®] Single Stage Louvres



i WOULD YOU LIKE TO KNOW MORE?

If you have any questions about this product, or if you would like to speak to a member of our expert team about how we can tailor a solution for you, call: **1300 165 678** or visit: louvrecad.com